

# POWER TOOLS CATALOGUE 2014/15



**Milwaukee®**

Nothing but **HEAVY DUTY™**



Nothing but **HEAVY DUTY**.™

# INTRODUCTION

**TO DEVELOP AND PRODUCE “NOTHING BUT HEAVY DUTY™” POWERTOOLS IS ONLY ONE PART OF THE MILWAUKEE® PROMISE.**



These tools need to last day in and day out. For this reason, serviceability is incorporated into every tool produced.

All powertools leave the factory with a complete documentation package including instructions for use, listing of customer service centres and safety instructions.

Milwaukee® has a worldwide service network. Should a problem arise requiring assistance or support at short notice, you can rely on our service centres/agents worldwide.

The global network ensures that our customers' needs and requirements are shared to influence future product development.

Expertise and competence gained over many years ensures a fast and efficient professional repair service.

Milwaukee tools strive to meet and surpass all international and European standards and directives for both design and safety. Constant research and development programs aim to anticipate and fulfill future market trends in all regulatory and efficiency requirements. Milwaukee is, amongst others, an active member of EPTA (European power tool association) and so is proudly aligned to all industry measurement standards agreed by the organization.

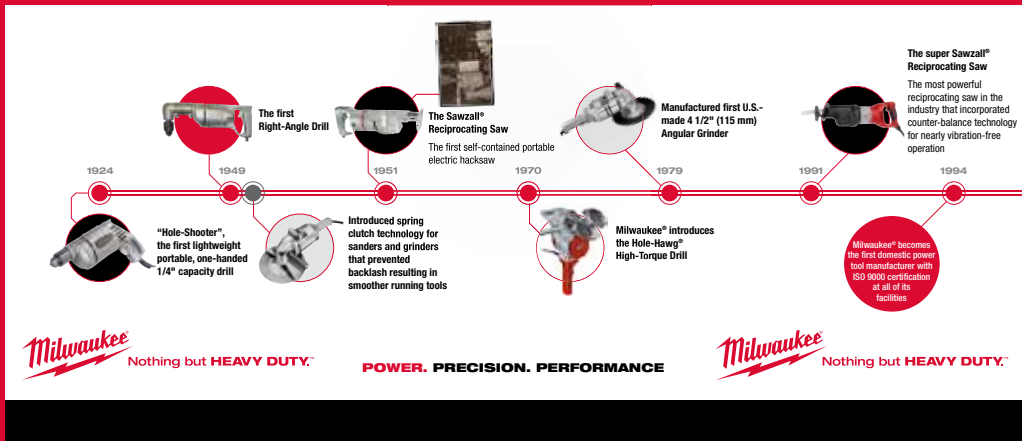
# 90<sup>th</sup> ANNIVERSARY

# CELEBRATING MILWAUKEE'S 90<sup>TH</sup> BIRTHDAY

2014 marks a huge milestone within Milwaukee's lifetime... it is celebrating 90 fantastic years of heavy duty power tool and accessory production!

Since its founding in 1924, Milwaukee has been an industry leader in power tool innovation with the launch of the first lightweight portable, one handed 1/4" drill. This was just the very beginning of Milwaukee's innovative future. With innovation and high quality embedded into the core of the business, Milwaukee went on to produce numerous world firsts including: the first right-angle drill (1949); the SAWZALL® Reciprocating Saw, the first self-contained portable electric hacksaw (1951); and the first US-Made 4 1/2" angle grinder.

Milwaukee's tradition of quality continued through the 1990's with the introduction of the Super Sawzall: the most powerful reciprocating saw in the industry, nearly vibration free. In 2005, Milwaukee was the first professional power tool manufacturer to use Lithium-Ion battery technology with their cordless tools launching the V28 line of batteries. Moving into modern times, Milwaukee is continuously expanding the M18 Fuel and the M12 Fuel range. Throughout the past 90 years Milwaukee has focused on one vision: Produce the best line of innovative heavy-duty power tools and accessories available for professional users. Lets look forward to another 90 years of huge milestones for Milwaukee!





# INTRODUCTION

## EXPERIENCE THE HEAVY DUTY DIFFERENCE

### TOOLS BUILT TO DO THE JOB BETTER.

At Milwaukee®, Heavy Duty is more than just a slogan. It is a promise to offer the best to professional users. Milwaukee® engineers don't just design tools.

They design tools to get the job done better, faster, reliably and safely.

[www.milwaukeetool.co.uk](http://www.milwaukeetool.co.uk)

**ALL YOU HAVE TO DO TO TAKE ADVANTAGE OF OUR  
EXTRA WARRANTY OFFER IS TO REGISTER ONLINE.  
NOTHING BUT HEAVY DUTY™**

#### HEAVY DUTY WARRANTY:



From 1 year to 3 years: Milwaukee® Offers a 3 Year warranty. Now with 2 year warranty on all REDLITHIUM-ION™ batteries.\*

Every Milwaukee® tool is tested according to a comprehensive certified process before leaving the factory and is warranted to be "Nothing but HEAVY DUTY™" qualified.



At Milwaukee® we take great pride in the products and services we offer to our professional customers. With this in mind we are pleased to offer additional protection by extending our warranty conditions to 3 years.

This service is available to you at no cost if you register your new Milwaukee® power tool within 30 days of the purchase date.

All you need to do in order to receive this Milwaukee® service: register your tool online!

Follow the link on [www.milwaukeetool.co.uk](http://www.milwaukeetool.co.uk)

Our Milwaukee® service is only available in those countries listed on our warranty registration website.

The extended warranty offer excludes products used in the hire industry, rechargeable battery packs, battery chargers and accessories supplied.

Please ring +44 (0)1628 894400 for questions regarding our warranty policy in relation to hire products.

\*Excluding M28 REDLITHIUM-ION™ batteries (1 Year Warranty)



# M12 FUEL™

DRIVEN TO OUTPERFORM.™



## POWERSTATE™ BRUSHLESS MOTOR

- Milwaukee® designed and built brushless motor
- Out-performs all leading competitors
- Up to 10x longer motor life\*



## REDLITHIUM-ION™ BATTERY PACKS

- Most durable pack on the market
- Up to 2x more run time\*
- Fuel gauge displays remaining charge
- Operates down to -20°C
- Individual cell monitoring to optimise tool run time and ensure long term pack durability



## REDLINK PLUS™ INTELLIGENCE

- Most advanced system electronics in cordless power tools with unique digital performance enhancement
- Total system communication with overload protection increases tool life
- Built-in fuel gauge displays remaining charge

UP TO  
**10X**  
LONGER  
MOTOR LIFE\*

UP TO  
**2X**  
MORE  
POWER\*

UP TO  
**2X**  
MORE  
RUN TIME\*



### ALSO AVAILABLE:



**M12 CD**  
M12 FUEL™ compact  
2-speed driver

**M12 CDD**  
M12 FUEL™ 2- speed  
compact drill driver



**M12 CID**  
M12 FUEL™ 1/4" Hex  
compact impact driver

**M12 CPD**  
M12 FUEL™ 2- speed  
compact percussion drill



**M12 CIW14**  
M12 FUEL™ compact  
1/4" impact wrench

**M12 CIW38**  
M12 FUEL™ compact  
3/8" impact wrench

**M12 CH**  
M12 FUEL™  
SDS hammer

\* Compared with competitive Li-Ion technology and/or previous Milwaukee® battery technology. Results dependent on voltage, tool and application.

## M12 CPD

### M12 FUEL™ 2-SPEED COMPACT PERCUSSION DRILL

- Milwaukee® designed and built brushless POWERSTATE™ motor for up to 10x longer motor life, up to 2x more power and up to 2x more run time
- REDLINK PLUS™ intelligence system delivers the most advanced digital overload protection for tool and battery and uniquely enhances the tool performance under load
- REDLITHIUM-ION™ battery pack delivers up to 2x more run time, up to 20% more power, up to 2x more battery life and operates better down to -20°C than other lithium-ion technologies
- Individual battery cell monitoring optimises tool run time and ensures long term pack durability
- First 13 mm metal chuck in this class for quick bit changes and bit retention
- Fuel gauge displays remaining charge
- Brightest LED workspace illumination
- Flexible battery system: works with all Milwaukee® M12™ batteries



	M12 CPD-402C
Battery pack capacity (Ah)	4.0
No. of batteries supplied	2
Charger supplied	80 min
No load speed gear 1 (rpm)	0 - 450
No load speed gear 2 (rpm)	0 - 1700
Chuck capacity (mm)	13
Max. drilling wood (mm)	25
Max. drilling steel (mm)	13
Max. drilling masonry (mm)	13
Max. percussion rate (bpm)	25,500
Max. torque (Nm)	44
Weight with battery pack (kg)	1.5
Supplied in	Kitbox
Article Number	4933441117

## M12 CDD

### M12 FUEL™ 2-SPEED COMPACT DRILL DRIVER

- Milwaukee® designed and built brushless POWERSTATE™ motor for up to 10x longer motor life, up to 2x more power and up to 2x more run time
- REDLINK PLUS™ intelligence system delivers the most advanced digital overload protection for tool and battery and uniquely enhances the tool performance under load
- REDLITHIUM-ION™ battery pack delivers up to 2x more run time, up to 20% more power, up to 2x more battery life and operates better down to -20°C than other lithium-ion technologies
- Individual battery cell monitoring optimises tool run time and ensures long term pack durability
- First 13 mm metal chuck in this class for quick bit changes and bit retention
- Fuel gauge displays remaining charge
- Brightest LED workspace illumination
- Flexible battery system: works with all Milwaukee® M12™ batteries



	M12 CDD-402C
Battery pack capacity (Ah)	4.0
No. of batteries supplied	2
Charger supplied	80 min
No load speed gear 1 (rpm)	0 - 450
No load speed gear 2 (rpm)	0 - 1700
Chuck capacity (mm)	13
Max. drilling wood (mm)	25
Max. drilling steel (mm)	13
Max. torque (Nm)	44
Weight with battery pack (kg)	1.5
Supplied in	Kitbox
Article Number	4933441115

## M12 CD

### M12 FUEL™ COMPACT 2-SPEED DRIVER

- Milwaukee® designed and built brushless POWERSTATE™ motor for up to 10x longer motor life, up to 2x more power and up to 2x more run time
- REDLINK PLUS™ intelligence system delivers the most advanced digital overload protection for tool and battery and uniquely enhances the tool performance under load
- REDLITHIUM-ION™ battery pack delivers up to 2x more run time, up to 20% more power, up to 2x more battery life and operates better down to -20°C than other lithium-ion technologies
- Individual battery cell monitoring optimises tool run time and ensures long term pack durability
- 1/4" Hex chuck for quick easy one handed bit change
- Fuel gauge displays remaining charge
- Brightest LED workspace illumination
- Flexible battery system: works with all Milwaukee® M12™ batteries



	M12 CD-202C
Battery pack capacity (Ah)	2.0
No. of batteries supplied	2
Charger supplied	80 min
No load speed gear 1 (rpm)	0 - 450
No load speed gear 2 (rpm)	0 - 1700
Tool reception	1/4" Hex
Max. drilling wood (mm)	25
Max. drilling steel (mm)	10
Max. torque (Nm)	37
Weight with battery pack (kg)	1.2
Supplied in	Kitbox
Article Number	4933440568

## M12 CID

### M12 FUEL™ 1/4" HEX COMPACT IMPACT DRIVER

- Milwaukee® designed and built brushless POWERSTATE™ motor for up to 3x longer motor life and up to 2x more power
- REDLINK PLUS™ intelligence system delivers the most advanced digital overload protection for tool and battery and uniquely enhances the tool performance under load
- The Milwaukee® DRIVE CONTROL™ allows the user to shift into different speed and torque settings to maximize application versatility
- Mode 1 for precision work (0 - 1200 rpm, 19 Nm of torque, 0 - 2700 ipm)
- Mode 2 delivers maximum performance for the toughest applications (0 - 2650 rpm, 135 Nm of torque, 0 - 3550 ipm)
- REDLITHIUM-ION™ battery pack delivers up to 2x more run time, up to 20% more power, up to 2x more battery life and operates better down to -20°C than other lithium-ion technologies
- Individual battery cell monitoring optimises tool run time and ensures long term pack durability
- 1/4" Hex chuck for quick and easy bit change
- Fuel gauge displays remaining charge
- Brightest LED workspace illumination
- Flexible battery system: works with all Milwaukee® M12™ batteries



	M12 CID-0	M12 CID-202C
Battery pack capacity (Ah)	-	2.0
No. of batteries supplied	0	2
Charger supplied	-	40 min
No load speed (rpm)	1200/2650	1200/2650
Tool reception	1/4" Hex	1/4" Hex
Impact rate (ipm)	2700/3550	2700/3550
Max. torque (Nm)	19/135	19/135
Weight with battery pack (kg)	-	1.0
Supplied in	-	Kitbox
Article Number	4933440410	4933440574

## M12 CIW14

### M12 FUEL™ COMPACT ¼" IMPACT WRENCH

- Milwaukee® designed and built brushless POWERSTATE™ motor for longer motor life
- REDLINK PLUS™ intelligence system delivers the most advanced digital overload protection for tool and battery and uniquely enhances the tool performance under load
- The Milwaukee® DRIVE CONTROL™ allows the user to shift into different speed and torque settings to maximize application versatility
- Mode 1 for precision work (0 – 1200 rpm, 13 Nm of torque, 0 - 3000 ipm)
- Mode 2 delivers maximum performance for the toughest applications (0 – 2650 rpm, 56 Nm of torque, 0 - 4000 ipm)
- REDLITHIUM-ION™ battery pack delivers up to 2x more run time, up to 20% more power, up to 2x more battery life and operates better down to -20°C than other lithium-ion technologies
- Individual battery cell monitoring optimises tool run time and ensures long term pack durability
- Fuel gauge displays remaining charge
- Brightest LED workspace illumination
- Flexible battery system: works with all Milwaukee® M12™ batteries



	M12 CIW14-0	M12 CIW14-202C
Battery pack capacity (Ah)	–	2.0
No. of batteries supplied	0	2
Charger supplied	–	40 min
No load speed (rpm)	1200/2650	1200/2650
Tool reception	¼" square	¼" square
Impact rate (ipm)	3000/4000	3000/4000
Max. torque (Nm)	13/56	13/56
Weight with battery pack (kg)	–	1.0
Supplied in	–	Kitbox
Article Number	4933440455	4933440576

## M12 CIW38

### M12 FUEL™ COMPACT ⅜" IMPACT WRENCH

- Milwaukee® designed and built brushless POWERSTATE™ motor for up to 2x more motor life and up to 40% more torque
- REDLINK PLUS™ intelligence system delivers the most advanced digital overload protection for tool and battery and uniquely enhances the tool performance under load
- The Milwaukee® DRIVE CONTROL™ allows the user to shift into different speed and torque settings to maximize application versatility
- Mode 1 for precision work (0 – 1200 rpm, 23 Nm of torque, 0 - 2650 ipm)
- Mode 2 delivers maximum performance for the toughest applications (0 – 2650 rpm, 158 Nm of torque, 0 - 3500 ipm)
- REDLITHIUM-ION™ battery pack delivers up to 2x more run time, up to 20% more power, up to 2x more battery life and operates better down to -20°C than other lithium-ion technologies
- Individual battery cell monitoring optimises tool run time and ensures long term pack durability
- Fuel gauge displays remaining charge
- Brightest LED workspace illumination
- Flexible battery system: works with all Milwaukee® M12™ batteries



	M12 CIW38-0	M12 CIW38-202C
Battery pack capacity (Ah)	–	2.0
No. of batteries supplied	0	2
Charger supplied	–	40 min
No load speed (rpm)	1200/2650	1200/2650
Tool reception	⅜" square	⅜" square
Impact rate (ipm)	2650/3500	2650/3500
Max. torque (Nm)	23/158	23/158
Weight with battery pack (kg)	–	1.0
Supplied in	–	Kitbox
Article Number	4933440460	4933440578

## M12 CH

### M12 FUEL™ SDS HAMMER

- Superior power to weight ratio in its class with Milwaukee® designed and built brushless POWERSTATE™ motor for up to 3x longer motor life and up to 2x more power
- REDLINK PLUS™ intelligence system delivers the most advanced digital overload protection for tool and battery and uniquely enhances the tool performance under load
- REDLITHIUM-ION™ battery pack
- Individual battery cell monitoring optimises tool run time and ensures long term pack durability
- 2-mode operation: choose rotary hammer or rotation only for maximum versatility
- Low vibration value of 4.3 m/s²
- Optimised hammer drilling up to 6 - 10 mm (max 13 mm)
- 43 mm neck size - compatible with M12 DE dust extractor
- Fuel gauge displays remaining charge
- Brightest LED workspace illumination
- Flexible battery system: works with all Milwaukee® M12™ batteries



	M12 CH-0	M12 CH-402C
Battery pack capacity (Ah)	–	4.0
No. of batteries supplied	0	2
Charger supplied	–	80 min
Tool reception	SDS-Plus	SDS-Plus
Blow energy [EPTA][J]	1.1	1.1
Max. drilling wood (mm)	13	13
Max. drilling steel (mm)	10	10
Max. drilling concrete (mm)	13	13
Vibration drilling (m/s²)	4.3	4.3
Weight with battery pack (kg)	–	1.9
Supplied in	–	Kitbox
Article Number	4933441947	4933441988



## M12 BPD

### M12™ SUB COMPACT PERCUSSION DRILL

- Milwaukee® high performance sub compact percussion drill measures 190 mm in length making it ideal for working within confined spaces
- REDLINK™ overload protection electronics in tool and battery pack deliver best in class system durability
- 10 mm metal chuck for quick bit changes and bit retention
- Optimised handle for better control and improved grip
- Individual battery cell monitoring optimises tool run time and ensures long term pack durability
- On board fuel gauge and LED light - added user convenience and illumination in low lit working conditions
- REDLITHIUM-ION™ battery pack delivers up to 2x more run time, up to 20% more power, up to 2x more battery life and operates better down to -20°C than other lithium-ion technologies
- Flexible battery system: works with all Milwaukee® M12™ batteries



M12 BPD-202C	
Battery pack capacity (Ah)	2.0
No. of batteries supplied	2
Charger supplied	40 min
No load speed gear 1 (rpm)	0 - 400
No load speed gear 2 (rpm)	0 - 1500
Chuck capacity (mm)	10
Max. drilling wood (mm)	22
Max. drilling steel (mm)	10
Max. drilling masonry (mm)	10
Max. percussion rate (bpm)	22,500
Max. torque (Nm)	30
Weight with battery pack (kg)	1.2
Supplied in	Kitbox
Article Number	4933443889

## M12 BDD

### M12™ SUB COMPACT DRILL DRIVER

- Milwaukee® high performance sub compact drill driver measures 187 mm in length making it ideal for working within confined spaces
- REDLINK™ overload protection electronics in tool and battery pack deliver best in class system durability
- 10 mm metal chuck for quick bit changes and bit retention
- Optimised handle for better control and improved grip
- Individual battery cell monitoring optimises tool run time and ensures long term pack durability
- On board fuel gauge and LED light - added user convenience and illumination in low lit working conditions
- REDLITHIUM-ION™ battery pack delivers up to 2x more run time, up to 20% more power, up to 2x more battery life and operates better down to -20°C than other lithium-ion technologies
- Flexible battery system: works with all Milwaukee® M12™ batteries



M12 BDD-202C	
Battery pack capacity (Ah)	2.0
No. of batteries supplied	2
Charger supplied	40 min
No load speed gear 1 (rpm)	0 - 400
No load speed gear 2 (rpm)	0 - 1500
Chuck capacity (mm)	10
Max. drilling wood (mm)	22
Max. drilling steel (mm)	10
Max. torque (Nm)	30
Weight with battery pack (kg)	1.2
Supplied in	Kitbox
Article Number	4933443891

## M12 BD

### M12™ SUB COMPACT DRIVER

- Milwaukee® high performance sub compact screw driver measures 175 mm in length making it ideal for working within confined spaces
- REDLINK™ overload protection electronics in tool and battery pack deliver best in class system durability
- 1/4" Hex chuck for quick easy one handed bit change
- Optimised handle for better control and improved grip
- Individual battery cell monitoring optimises tool run time and ensures long term pack durability
- On board fuel gauge and LED light - added user convenience and illumination in low lit working conditions
- REDLITHIUM-ION™ battery pack delivers up to 2x more run time, up to 20% more power, up to 2x more battery life and operates better down to -20°C than other lithium-ion technologies
- Flexible battery system: Works with all Milwaukee® M12™ batteries



M12 BD-202C	
Battery pack capacity (Ah)	2.0
No. of batteries supplied	2
Charger supplied	40 min
No load speed gear 1 (rpm)	0 - 400
No load speed gear 2 (rpm)	0 - 1500
Tool reception	1/4" Hex
Max. drilling wood (mm)	22
Max. drilling steel (mm)	10
Wood screws to (mm)	6
Max. torque (Nm)	30
Weight with battery pack (kg)	1.0
Supplied in	Kitbox
Article Number	4933443885

## M12 BID

### M12™ SUB COMPACT IMPACT DRIVER

- Milwaukee® high performance sub compact impact driver measures 165 mm in length making it ideal for working within confined spaces
- REDLINK™ overload protection electronics in tool and battery pack deliver best in class system durability
- Heavy duty full metal gearbox and gears for superior durability and maximum torque
- 1/4" Hex chuck for quick and easy bit change
- Optimised handle for better control and improved grip
- Individual battery cell monitoring optimises tool run time and ensures long term pack durability
- On board fuel gauge and LED light - added user convenience and illumination in low lit working conditions
- REDLITHIUM-ION™ battery pack delivers up to 2x more run time, up to 20% more power, up to 2x more battery life and operates better down to -20°C than other lithium-ion technologies
- Flexible battery system: works with all Milwaukee® M12™ batteries



	M12 BID-0	M12 BID-202C
Battery pack capacity (Ah)	-	2.0
No. of batteries supplied	0	2
Charger supplied	-	40 min
No load speed (rpm)	0 - 2500	0 - 2500
Impact rate (ipm)	0 - 3300	0 - 3300
Tool reception	1/4" Hex	1/4" Hex
Max. torque (Nm)	112	112
Weight with battery pack (kg)	-	1.0
Supplied in	-	Kitbox
Article Number	4933441955	4933443895



## M12 BIW38

### M12™ SUB COMPACT 3/8" IMPACT WRENCH

- Milwaukee® high performance sub compact impact wrench measures 165 mm in length making it ideal for working within confined spaces
- REDLINK™ overload protection electronics in tool and battery pack deliver best in class system durability
- Heavy duty full metal gearbox and gears for superior durability and maximum torque
- 3/8" square drive for use with universal sockets
- Optimised handle for better control and improved grip
- Individual battery cell monitoring optimises tool run time and ensures long term pack durability
- On board fuel gauge and LED light - added user convenience and illumination in low lit working conditions
- REDLITHIUM-ION™ battery pack delivers up to 2x more run time, up to 20% more power, up to 2x more battery life and operates better down to -20°C than other lithium-ion technologies
- Flexible battery system: works with all Milwaukee® M12™ batteries



	M12 BIW38-0	M12 BIW38-202C
Battery pack capacity (Ah)	-	2.0
No. of batteries supplied	0	2
Charger supplied	-	40 min
No load speed (rpm)	0 - 2500	0 - 2500
Tool reception	3/8" square	3/8" square
Impact rate (ipm)	0 - 3300	0 - 3300
Max. torque (Nm)	135	135
Weight with battery pack (kg)	-	1.0
Supplied in	-	Kitbox
Article Number	4933441985	4933443899

## M12 BIW14

### M12™ SUB COMPACT 1/4" IMPACT WRENCH

- Milwaukee® high performance sub compact impact wrench measures 152 mm in length making it ideal for working within confined spaces
- REDLINK™ overload protection electronics in tool and battery pack deliver best in class system durability
- Heavy duty full metal gearbox and gears for superior durability and maximum torque
- 1/4" square drive for use with universal sockets
- Optimised handle for better control and improved grip
- Individual battery cell monitoring optimises tool run time and ensures long term pack durability
- On board fuel gauge and LED light - added user convenience and illumination in low lit working conditions
- REDLITHIUM-ION™ battery pack delivers up to 2x more run time, up to 20% more power, up to 2x more battery life and operates better down to -20°C than other lithium-ion technologies
- Flexible battery system: works with all Milwaukee® M12™ batteries



	M12 BIW14-0	M12 BIW14-202C
Battery pack capacity (Ah)	-	2.0
No. of batteries supplied	0	2
Charger supplied	-	40 min
No load speed (rpm)	0 - 2500	0 - 2500
Tool reception	1/4" square	1/4" square
Impact rate (ipm)	0 - 3300	0 - 3300
Max. torque (Nm)	50	50
Weight with battery pack (kg)	-	1.0
Supplied in	-	Kitbox
Article Number	4933441980	4933443897

## M12 H

### M12™ COMPACT SDS HAMMER DRILL

- Ergonomically designed, compact and light weight allows for work in tight spaces and reduces fatigue during all day use
- REDLINK™ overload protection electronics in tool and battery pack deliver best in class system durability
- L-shape, 2 mode hammer drill for hammer & rotary drilling for maximum versatility
- Low vibration at 6.7 m/s²
- Optimised hammer drilling up to 4 - 8 mm (max 13 mm)
- Individual battery cell monitoring optimises tool run time and ensures long term pack durability
- On board fuel gauge and LED light - added user convenience and illumination in low lit working conditions
- REDLITHIUM-ION™ battery pack delivers up to 2x more run time, up to 20% more power, up to 2x more battery life and operates better down to -20°C than other lithium-ion technologies
- Flexible battery system: works with all Milwaukee® M12™ batteries



	M12 H-0	M12 H-402C
Battery pack capacity (Ah)	-	4.0
No. of batteries supplied	0	2
Charger supplied	-	80 min
Tool reception	SDS-Plus	SDS-Plus
Blow energy [EPTA][J]	0.9	0.9
Max. drilling wood (mm)	10	10
Max. drilling steel (mm)	8	8
Max. drilling concrete (mm)	13	13
Vibration drilling (m/s²)	6.7	6.7
Weight with battery pack (kg)	-	1.8
Supplied in	-	Kitbox
Article Number	4933431355	4933443161

## M12 DE

### M12™ UNIVERSAL HAMMER VAC

- Fits all Milwaukee® SDS-plus and the majority of competitor's drills between 43-59 mm neck size
- REDLINK™ overload protection electronics in tool and battery pack deliver best in class system durability
- Multi functionality - can be used as a dedicated dust extraction as well as a hand held vac
- HEPA filter: 99.7 % efficient
- Automatic 5 sec switch off time delay to ensure dust from drilled hole is completely cleaned
- Right or left mounting
- Individual battery cell monitoring optimises tool run time and ensures long term pack durability
- Fuel gauge displays remaining charge
- REDLITHIUM-ION™ battery pack delivers up to 2x more run time, up to 20% more power, up to 2x more battery life and operates better down to -20°C than other lithium-ion technologies
- Flexible battery system: works with all Milwaukee® M12™ batteries
- Supplied with side handle and 3 neck collars



	M12 DE-0C	M12 DE-151C
Battery pack capacity (Ah)	-	1.5
No. of batteries supplied	0	1
Charger supplied	-	30 min
Max. drill bit diameter (mm)	4 - 16	4 - 16
Max. drilling depth (mm)	120	120
Weight with battery pack (kg)	-	1.7
Supplied in	Kitbox	Kitbox
Article Number 12 V	4933440510	4933443202

## M12 IR M12™ IMPACT RATCHET

- Best in class power and speed with 47 Nm of torque and a no load speed of 250 rpm
- REDLINK™ overload protection electronics in tool and battery pack deliver best in class system durability
- Reinforced housing - provides high durability similar to steel ratchets
- Compact design - ideal for tight spaces and small engine bays
- Variable speed metal paddle switch trigger - provides greater user control during application
- Individual battery cell monitoring optimises tool run time and ensures long term pack durability
- On board fuel gauge and LED light - added user convenience and illumination in low lift working conditions
- REDLITHIUM-ION™ battery pack delivers up to 2x more run time, up to 20% more power, up to 2x more battery life and operates better down to -20°C than other lithium-ion technologies
- Flexible battery system: works with all Milwaukee® M12™ batteries



	M12 IR (1/4")	M12 IR (3/8")
Battery pack capacity (Ah)	1.5	1.5
No. of batteries supplied	1	1
Charger supplied	30 min	30 min
Tool reception	1/4" square	3/8" square
Max. torque (Nm)	40	47
No load speed (rpm)	0 - 250	0 - 250
Length (mm)	274	274
Weight with battery pack (kg)	0.9	0.9
Supplied in	Tool bag	Tool bag
Article Number	4933431270	4933431280

## C12 RAD M12™ RIGHT ANGLE DRILL

- Heavy Duty full metal gearbox and gears for superior durability and maximum torque
- REDLINK™ overload protection electronics in tool and battery pack deliver best in class system durability
- Variable speed paddle switch trigger for comfortable working in any situation
- 10 mm chuck for quick bit changes and bit retention
- Slimline soft grip handle
- Individual battery cell monitoring optimises tool run time and ensures long term pack durability
- On board fuel gauge and LED light - added user convenience and illumination in low lift working conditions
- REDLITHIUM-ION™ battery pack delivers up to 2x more run time, up to 20% more power, up to 2x more battery life and operates better down to -20°C than other lithium-ion technologies
- Flexible battery system: works with all Milwaukee® M12™ batteries



	C12 RAD-0	C12 RAD-202C
Battery pack capacity (Ah)	-	2.0
No. of batteries supplied	0	2
Charger supplied	-	40 min
No load speed (rpm)	0 - 800	0 - 800
Chuck capacity (mm)	10	10
Max. drilling wood (mm)	22	22
Max. drilling steel (mm)	10	10
Max. torque (Nm)	12	12
Weight with battery pack (kg)	-	1.1
Supplied in	-	Tool bag
Article Number	4933416900	4933441218

## C12 RT M12™ ROTARY TOOL

- Versatile cordless solution for cutting and removal applications
- REDLINK™ overload protection electronics in tool and battery pack deliver best in class system durability
- Variable speed (5000 - 32,000 rpm)
- 0.8 mm - 3.2 mm collet fits all current accessories in the market
- Spindle lock mechanism for easy accessory changes
- Superior ergonomics and lightweight
- Individual battery cell monitoring optimises tool run time and ensures long term pack durability
- Fuel gauge displays remaining charge
- Flexible battery system: works with all Milwaukee® M12™ batteries



	C12 RT-0
Battery pack capacity (Ah)	-
No. of batteries supplied	0
Charger supplied	-
No load speed (rpm)	5000 - 32,000
Collet capacity (mm)	0.8 / 1.6 / 2.4 / 3.2
Weight with battery pack (kg)	0.6
Supplied in	-
Article Number	4933427183

## C12 MT M12™ MULTI-TOOL

- Versatile cordless solution for cutting and removal applications
- REDLINK™ overload protection electronics in tool and battery pack deliver best in class system durability
- Variable speed (5000 - 20,000 rpm) and 1.5° left/right oscillation movement allows quick completion of professional applications into materials such as metal, wood and plastic
- Will accept competitor accessories
- Individual battery cell monitoring optimises tool run time and ensures long term pack durability
- Fuel gauge displays remaining charge
- REDLITHIUM-ION™ battery pack delivers up to 2x more run time, up to 20% more power, up to 2x more battery life and operates better down to -20°C than other lithium-ion technologies
- Flexible battery system: works with all Milwaukee® M12™ batteries
- Supplied with an adapter, plunge cut blade OSC 112, sanding backing pad, 5 x sanding sheets



	C12 MT-0	C12 MT-402C
Battery pack capacity (Ah)	-	4.0
No. of batteries supplied	0	2
Charger supplied	-	80 min
Oscillation angle left/ right (°)	1.5	1.5
No load speed (rpm)	5000 - 20,000	5000 - 20,000
Weight with battery pack (kg)	-	1.2
Supplied in	-	Kitbox
Article Number	4933427180	4933441708

## C12 PN M12™ PALM NAILER

- Professional power effectively drives 100 mm framing nails in less than 3 seconds
- REDLINK™ overload protection electronics in tool and battery pack deliver best in class system durability
- Superior ergonomics – user-preferred palm style grip provides outstanding comfort and control
- Fits into locations where a hammer cannot be swung
- Increased run time: drives up to 100 90mm nails on a single charge
- Individual battery cell monitoring optimises tool run time and ensures long term pack durability
- Fuel gauge displays remaining charge
- Flexible battery system: works with all Milwaukee® M12™ batteries



	C12 PN-0
Battery pack capacity (Ah)	–
No. of batteries supplied	0
Charger supplied	–
Max. percussion rate (bpm)	2700
Max. nail size (mm)	90
Weight with battery pack (kg)	1.6
Supplied in	–
Article Number	4933427182

## M12 BS M12™ CORDLESS BANDSAW

- Compact light weight design for cutting with one hand overhead in existing installations and in tight spaces
- REDLINK™ overload protection electronics in tool and battery pack deliver best in class system durability
- Cuts a multitude of materials: steel, stainless steel, copper, plastic, aluminium
- Cold cutting - spark and burr free
- Clean cut - balanced handle design combined with 8-large ball bearing blade supports provide best in class cut quality
- Individual battery cell monitoring optimises tool run time and ensures long term pack durability
- On board fuel gauge and LED light
- REDLITHIUM-ION™ battery pack delivers up to 2x more run time, up to 20% more power, up to 2x more battery life and operates better down to -20°C than other lithium-ion technologies
- Flexible battery system: works with all Milwaukee® M12™ batteries
- Supplied with a 18 Tpi blade



	M12 BS-0	M12 BS-402C
Battery pack capacity (Ah)	–	4.0
No. of batteries supplied	0	2
Charger supplied	–	80 min
No load speed (rpm)	0 - 85	0 - 85
Max. cutting capacity (mm)	41 x 41	41 x 41
Blade length (mm)	687	687
Weight with battery pack (kg)	–	3.2
Supplied in	–	Kitbox
Article Number	4933431310	4933446135

## M12 JS M12™ JIGSAW

- New grip design combines the best features from both top handle and barrel grip jigsaw design
- REDLINK™ overload protection electronics in tool and battery pack deliver best in class system durability
- Variable speed - electronic trigger provides user flexibility and control
- Smooth cut - minimal vibration during cutting provides ultra smooth performance
- Precision roller guide increases user control and reduces blade deviation
- Line of sight - the compact tool design improves cut line visibility
- Tool free bevel facility - quick and easy bevel adjustment up to 45°
- QUIK-LOK T-Shank blade clamp
- Individual battery cell monitoring optimises tool run time and ensures long term pack durability
- On board fuel gauge and LED light
- REDLITHIUM-ION™ battery pack delivers up to 2x more run time, up to 20% more power, up to 2x more battery life and operates better down to -20°C than other lithium-ion technologies
- Flexible battery system: works with all Milwaukee® M12™ batteries
- Non marking shoe comes as standard to protect work surfaces from scratching



	M12 JS-0	M12 JS-402C
Battery pack capacity (Ah)	–	4.0
No. of batteries supplied	0	2
Charger supplied	–	80 min
No load stroke rate (spm)	0 - 2800	0 - 2800
Stroke length (mm)	19	19
Weight with battery pack (kg)	–	2.1
Supplied in	–	Tool bag
Article Number	4933431305	4933441703



**C12 HZ**  
**M12™ HACKZALL**

- Milwaukee® high performance compact one handed use hack saw, measuring only 280 mm in length, making it ideal for working within confined spaces
- REDLINK™ overload protection electronics in tool and battery pack deliver best in class system durability
- Milwaukee® patented FIXTEC clamp for fast and easy keyless blade change
- Low vibration at 10.5 m/s²
- Individual battery cell monitoring optimises tool run time and ensures long term pack durability
- On board fuel gauge and LED light - added user convenience and illumination in low lit working conditions
- REDLITHIUM-ION™ battery pack delivers up to 2x more run time, up to 20% more power, up to 2x more battery life and operates better down to -20°C than other lithium-ion technologies
- Flexible battery system: works with all Milwaukee® M12™ batteries



	C12 HZ-0	C12 HZ-202C
Battery pack capacity (Ah)	-	2.0
No. of batteries supplied	0	2
Charger supplied	-	40 min
No load stroke rate (spm)	0 - 3000	0 - 3000
Stroke length (mm)	13	13
Weight with battery pack (kg)	-	1.2
Supplied in	-	Kitbox
Article Number	4933411925	4933441198

**C12 PC**  
**M12™ COPPER PIPE CUTTER**

- Milwaukee® high performance 500 rpm motor cuts 12 mm copper pipe in less than 3 seconds
- REDLINK™ overload protection electronics in tool and battery pack deliver best in class system durability
- Auto locking cut mechanism cuts installed copper tubing with as little as 37 mm clearance
- Auto adjusting jaws – automatically adjust to pipe size
- All metals sealed front end – rust and corrosion resistant cut heat
- Slimline soft grip handle
- Individual battery cell monitoring optimises tool run time and ensures long term pack durability
- On board fuel gauge and LED light - added user convenience and illumination in low lit working conditions
- Flexible battery system: works with all Milwaukee® M12™ batteries



	C12 PC-0
Battery pack capacity (Ah)	-
No. of batteries supplied	0
Charger supplied	-
copper tubes (mm)	12, 15, 18, 22, 25, 28
Minimum space for tube cutting (mm)	80
Length (mm)	360
Weight with battery pack (kg)	1.5
Supplied in	-
Article Number	4933411920

**M12 SL**  
**M12™ STICK LIGHT**

- Powerful three LED design provides 220 Lumen
- Removable lens plate allows the user to replace lens plate when damaged instead of replacing entire unit
- Adjustable metal hook allows for light to be hung in multiple orientations when being used
- Compact design - operates in locations other lights cannot
- Option accessory - accessory magnet available
- Flexible battery system: works with all Milwaukee® M12™ batteries



	M12 SL-0
Voltage (V)	12
Battery type	Li-ion
System	M12
Battery compatibility	All Milwaukee® M12™ batteries
Bulb type	LED
Article Number	4932430178





## M12 HPT M12™ HYDRAULIC PRESS TOOL

- The industry's smallest, lightest press tool; weighs only 1.8 kg for greater user comfort
- REDLINK™ overload protection electronics in tool and battery pack deliver best in class system durability
- Patented one hand operation allows to work in restricted areas
- Battery-tool communication: press operation doesn't start to prevent incomplete pressing in case of low charged battery. Pre-press battery check ensures enough charge to complete each press
- Service intervals: advanced electronics count cycles and notify users when tool reaches calibration intervals
- 4-step and precise battery status indicator
- Press indicator: provides visual confirmation of a quality connection
- Long-term reliability: goes an industry-leading 40,000 cycles between calibration inspections - the tool will not stop working after reaching 40,000 cycles
- Outstanding pressing range up to 35 mm metal- and 40 mm composite pipes
- Individual battery cell monitoring optimises tool run time and ensures long term pack durability
- Fuel gauge displays remaining charge
- REDLITHIUM-ION™ battery pack delivers up to 2x more run time, up to 20% more power, up to 2x more battery life and operates better down to -20°C than other lithium-ion technologies
- Flexible battery system: works with all Milwaukee® M12™ batteries



	M12 HPT-202C	M12 HPT-202C M-KIT	M12 HPT-202C V-KIT	M12 HPT-202C TH-KIT	M12 HPT-202C U-KIT
Battery pack capacity (Ah)	2.0	2.0	2.0	2.0	2.0
No. of batteries supplied	2	2	2	2	2
Charger supplied	40 min	40 min	40 min	40 min	40 min
Press cycles	40,000	40,000	40,000	40,000	40,000
Weight with battery pack (kg)	1.8	1.8	1.8	1.8	1.8
Standard equipment	–	3 x M-profile jaws (15/22/28 mm)	3 x V-profile jaws (15/22/28 mm)	3 x TH-profile jaws (16/20/32 mm)	3 x U-profile jaws (16/20/25 mm)
Supplied in	Kitbox	Kitbox	Kitbox	Kitbox	Kitbox
Article Number	4933443085	4933443095	4933443100	4933443105	4933443110

### FORCE LOGIC™ JAWS FOR M12 HPT



Jaw profile	Fits	Nominal size	Art. No. 4932-	EAN Code 4002395
M	Geberit-Mapress	M12	430243	379040
M	VSH	M15	430245	379064
M	Eurotubi	M18	430247	379088
M	Raccorderie	M22	430249	379101
M	Metalliche Rubinetterie	M28	430251	379125
M	Bresciane	M35	430253	379149
M	Sanha	M35	430253	379149
V		V12	430260	379217
V		V15	430262	379231
V	Viega Comap	V18	430264	379255
V	IBP	V22	430266	379279
V	Sanha	V28	430268	379293
V		V35	430270	379316
TH		TH14	430274	379354
TH	ALB Comap	TH16	430276	379378
TH	Fränksche	TH18	430278	379392
TH		TH20	430280	379415

Jaw profile	Fits	Nominal size	Art. No. 4932-	EAN Code 4002395
TH	Henco	TH25	430282	379439
TH	IPA	TH26	430283	379446
TH	Sanha	TH32	430285	379460
TH	Tiemme	TH32	430285	379460
TH	Ivar	TH40	430287	379484
U		U14	430291	379521
U		U16	430293	379545
U	Uponor	U18	430295	379569
U	ALB	U20	430297	379583
U	Kan-therm	U25	430299	379606
U	Wavin	U32	430301	379620
U		U40	430303	379644

## M12 PCG/310

### M12™ CAULK GUN WITH 310 ML CARTRIDGE HOLDER

- Up to 1780 N of force
- REDLINK™ overload protection electronics in tool and battery pack deliver best in class system durability
- Optimised performance with all construction adhesives and cool temperatures
- Anti-drip feature prevents unwanted dripping when trigger is released
- Dial control with 6 speed settings allows for maximum bead control
- Large robust plunger design ensures constant flow, reduces blow back and expels all sealant from cartridge
- Individual battery cell monitoring optimises tool run time and ensures long term pack durability
- Fuel gauge displays remaining charge
- REDLITHIUM-ION™ battery pack delivers up to 2x more run time, up to 20% more power, up to 2x more battery life and operates better down to -20°C than other lithium-ion technologies
- Flexible battery system: works with all Milwaukee® M12™ batteries



	M12 PCG/310C-151B
Battery pack capacity (Ah)	1.5
No. of batteries supplied	1
Charger supplied	30 min
Max. pushing force (N)	1780
Speed settings	6
Standard equipment	310 ml cartridge
Weight with battery pack (kg)	1.9
Supplied in	-
Article Number	4933431325

## M12 PCG/400

### M12™ CAULK GUN WITH 400 ML TUBE

- Up to 1780 N of force
- REDLINK™ overload protection electronics in tool and battery pack deliver best in class system durability
- Optimised performance with all construction adhesives and cool temperatures
- Anti-drip feature prevents unwanted dripping when trigger is released
- Dial control with 6 speed settings allows for maximum bead control
- Large robust plunger design ensures constant flow, reduces blow back and expels all sealant from cartridge
- Individual battery cell monitoring optimises tool run time and ensures long term pack durability
- Fuel gauge displays remaining charge
- REDLITHIUM-ION™ battery pack delivers up to 2x more run time, up to 20% more power, up to 2x more battery life and operates better down to -20°C than other lithium-ion technologies
- Flexible battery system: works with all Milwaukee® M12™ batteries



	M12 PCG/400A-151B
Battery pack capacity (Ah)	1.5
No. of batteries supplied	1
Charger supplied	30 min
Max. pushing force (N)	1780
Speed settings	6
Standard equipment	400 ml aluminium
Weight with battery pack (kg)	1.9
Supplied in	-
Article Number	4933440360

## M12 PCG/600

### M12™ CAULK GUN WITH 600 ML TUBE

- Up to 1780 N of force
- REDLINK™ overload protection electronics in tool and battery pack deliver best in class system durability
- Optimised performance with all construction adhesives and cool temperatures
- Anti-drip feature prevents unwanted dripping when trigger is released
- Dial control with 6 speed settings allows for maximum bead control
- Large robust plunger design ensures constant flow, reduces blow back and expels all sealant from cartridge
- Individual battery cell monitoring optimises tool run time and ensures long term pack durability
- Fuel gauge displays remaining charge
- REDLITHIUM-ION™ battery pack delivers up to 2x more run time, up to 20% more power, up to 2x more battery life and operates better down to -20°C than other lithium-ion technologies
- Flexible battery system: works with all Milwaukee® M12™ batteries



	M12 PCG/600A-151B
Battery pack capacity (Ah)	1.5
No. of batteries supplied	1
Charger supplied	30 min
Max. pushing force (N)	1780
Speed settings	6
Standard equipment	600 ml aluminium
Weight with battery pack (kg)	1.9
Supplied in	-
Article Number	4933440365

## M12 GG

### M12™ GREASE GUN

- Powerful 12 V motor delivers over 562 bar max operating pressure
- REDLINK™ overload protection electronics in tool and battery pack deliver best in class system durability
- Best in class run time - dispenses up to 7 cartridges per charge
- Superior handle balance and ergonomics - only 355 mm long and 3.2 kg
- Air bleeder valve - priming mechanism for quick flow
- Integrated hose storage & shoulder strap loop - added user convenience and less down time
- Three way loading - bulk, cartridge and suction capable
- Grease capacity 400 ml cartridge, 473 ml bulk
- Individual battery cell monitoring optimises tool run time and ensures long term pack durability
- On board fuel gauge and LED light
- REDLITHIUM-ION™ battery pack delivers up to 2x more run time, up to 20% more power, up to 2x more battery life and operates better down to -20°C than other lithium-ion technologies
- Flexible battery system: works with all Milwaukee® M12™ batteries
- Supplied with 914 mm x 14.4 mm high pressure flex hose with spring guard and grease coupler



	M12 GG-0
Battery pack capacity (Ah)	-
No. of batteries supplied	0
Charger supplied	-
Pressure (bar)	562
Weight with battery pack (kg)	-
Supplied in	-
Article Number	4933440435

## C12 PP

### M12™ POWERPORT

- Convenient charger for mobile equipment
- REDLINK™ overload protection electronics in tool and battery pack deliver best in class system durability
- 12V DC & USB ports for a variety of charging cables
- Charge status LED displays current charge status of equipment
- Flexible battery system: works with all Milwaukee® M12™ batteries



#### C12 PP-0

Battery pack capacity (Ah)	–
No. of batteries supplied	0
Charger supplied	–
Dimensions (mm)	125 x 53 x 58
Weight with battery pack (kg)	0.3
Supplied in	–
Article Number	4933416560

## C12 BL2

### M12™ PLUMB BOB LASER

- The first box laser on the market to integrate a power tool battery increasing the versatility and usage in conjunction with other tools in the range
- Increased accuracy over manual methods with levels of 0.2 mm per meter
- Automatic levelling to ± 0.2 mm per meter increases speed and accuracy
- High strength magnets located on the rear of the unit for use with metal stud work and tracking
- Out of level indicator: laser dot will blink to demonstrate that it is out of level by ± 4 degrees
- Easy use one button operation
- Flexible battery system: works with all Milwaukee® M12™ batteries
- Supplied with a carrying pouch



#### C12 BL2-0

Battery pack capacity (Ah)	–
No. of batteries supplied	0
Charger supplied	–
Laser classification	Class 2
Accuracy (mm/m)	+/- 0.2 mm over 1 m
Range (m)	30
Weight with battery pack (kg)	0.6
Supplied in	–
Article Number	4933416240

## C12 JSR

### M12™ RADIO WITH MP3 PLAYER CONNECTION

- Advanced technology tuner for high reception and clarity
- Powers from either M12™ battery or 230 V mains supply
- At least 8 hour run time on a M12™ Milwaukee® battery
- Weather sealed auxiliary compartment protects MP3 players and other audio devices
- Digital display tuner for accurate signal selection
- Mute button for instant volume kill
- 220 - 240 V power adapter, 3.5 mm jack plug for auxiliary connection i.e iPods



#### C12 JSR-0

Voltage (DC) (V)	12
Voltage (AC) (V)	220-240
Battery type	Li-ion
Battery pack capacity (Ah)	–
No. of batteries supplied	0
Charger supplied	–
Dimensions (mm)	267 x 102 x 178
Weight (kg)	1.8
Supplied in	–
Article Number	4933416365

## C12-28 DCR

### M12™ - M28™ RADIO WITH MP3 PLAYER CONNECTION

- Exclusive AM/FM tuner with digital processor delivers highest reception accuracy and signal clarity
- Premium speakers and 40 W amplifier produce rich, full sound
- Weather sealed auxiliary compartment protects MP3 players and other audio devices
- Shock absorbing ABS polymer and steel construction protects against abusive jobsite conditions
- Customisable equaliser and 10-station preset
- Powered by M12™, M14™, M18™, M28™, V18, V28 & PBS 3000 batteries at a mains AC outlet
- Supplied with 220 - 240 V power adapter, 3.5 mm jack plug for auxiliary connection i.e iPods



#### C12-28 DCR-0

Voltage (DC) (V)	12 - 28
Voltage (AC) (V)	220 - 240
Battery type	Li-ion & PBS 3000
Battery pack capacity (Ah)	–
No. of batteries supplied	0
Charger supplied	–
Dimensions (mm)	495 x 241 x 279
Weight (kg)	7.3
Supplied in	–
Article Number	4933410665

**M12 HJ BLACK**  
**M12™ PREMIUM HEATED**  
**JACKET**

- Cold water technology - multi layered fabric actively warms the body & stimulates blood circulation
- 5 sewn in carbon fibre heating zones - distributes heat to core body areas and to the pockets
- Superior runtime - up to 8 hours of heat on single battery charge
- Easy touch heat controller - 3 heat settings: High, Medium, Low
- M12™ battery holder - sleek pocket design for minimal user interference
- USB power port to charge electrical devices - charge phones/MP3 players whilst on the move
- Hand pockets + added chest pocket - ideal for cell phone, iPod, MP3 player, etc storage
- Water and wind resistant - provides comfort and durability in harsh environment
- Expandable battery pouch for use with all M12™ REDLITHIUM-ION™ battery packs



	M12 HJ BLACK-0 (M)	M12 HJ BLACK-0 (L)	M12 HJ BLACK-0 (XL)	M12 HJ BLACK-0 (XXL)
Battery pack capacity (Ah)	–	–	–	–
No. of batteries supplied	0	0	0	0
Charger supplied	–	–	–	–
Size	M	L	XL	XXL
Material	100% Polyester	100% Polyester	100% Polyester	100% Polyester
Weight with battery pack (kg)	–	–	–	–
Supplied in	–	–	–	–
Article Number	4933433781	4933433782	4933433783	4933433784





## M12 HJ HI-VIS M12™ HEATED JACKET

- Superior run time: up to 8 hours of continuous heat per battery charge
- Water and wind resistant for a variety of weather conditions, ideal for cold weather activities
- Concealed easy touch heat controller (located inside the lapel) 3 heat settings plus warm-up feature
- 3 carbon fibre heat zones, right chest, left chest and central back distribute heat to core body areas
- Expandable battery pouch for use with all M12™ REDLITHIUM-ION™ battery packs



	M12 HJ HI-VIS-0 (L)	M12 HJ HI-VIS-0 (XL)	M12 HJ HI-VIS-0 (XXL)
Battery pack capacity (Ah)	–	–	–
No. of batteries supplied	0	0	0
Charger supplied	–	–	–
Size	L	XL	XXL
Material	100% Polyester	100% Polyester	100% Polyester
Weight with battery pack (kg)	–	–	–
Supplied in	–	–	–
Article Number	4933433786	4933433787	4933433788

### M18™ USB POWER SOURCE FOR M12™ HEATED JACKETS

Article Number 4932430084

- Powers the jacket on M18™ battery packs
- USB charging port for MP3 player, mobile phone, digital camera, GPS



### 12 V CAR PLUG FOR M12™ HEATED JACKETS

Article Number 4932430085

- Powers the jacket on any 12V cigarette style outlet



**COMPATIBLE WITH M12™  
REDLITHIUM-ION™ 2.0 AH &  
4.0 AH BATTERIES**  
(M12 B4 BATTERIES SOLD SEPARATELY)  
Article Number 4932430065

## M12 TI M12™ THERMAL IMAGE CAMERA

- Crisp, high resolution 160 x 120 pixel thermal images for better definition and clarity
- Broader temperature range (-10 to 350°C) to cover more applications
- Capture thermal and visual images on every trigger pull for enhanced reporting
- Complete report software to easily analyse images
- Built-in visual camera and flashlight for improved analysis
- No blur, no wait display updates the screen image 60 times a second
- Rugged overmolding for increased durability and grip
- 5x faster battery change over closest competitor
- REDLITHIUM-ION™ battery pack delivers up to 2x more run time, up to 20% more power, up to 2x more battery life and operates better down to -20°C than other lithium-ion technologies
- Flexible battery system: works with all Milwaukee® M12™ batteries
- Supplied with thermal imager report software, 2 GB SD card, USB cable and SD card reader



	M12 TI-21C
Battery pack capacity (Ah)	1.5
No. of batteries supplied	1
Charger supplied	30 min
Temperature range	-10°C - +350°C
Basic accuracy (%)	2
Display	Color LCD
Display size (mm)	640 x 480
Display resolution (pixels)	160 x 120
IP protection class	54
Weight with battery pack (kg)	1.0
Supplied in	Kitbox
Article Number	4933433105

## M12 IC M12™ CORDLESS M-SPECTOR 360° CAMERA

- Rotating screen: screen rotates 270 degrees providing the user fluid image control
- Optimised 68.6 mm LCD: digital image and larger screen delivers crisp, clear picture
- 9 mm 640 x 480 digital image sensor: superior image quality in nearly half the size
- 4 surround LED lights: best in class brightness without shadow or glare
- Enhanced cable: aluminium head and improved flexibility deliver unmatched durability and pipe manoeuvrability
- REDLITHIUM-ION™ battery pack delivers up to 2x more run time, up to 20% more power, up to 2x more battery life and operates better down to -20°C than other lithium-ion technologies
- Flexible battery system: works with all Milwaukee® M12™ batteries
- Accessories: hook, magnet, and mirror attachments help to inspect and solve



	M12 IC-21C (S)	M12 IC-21C (L)
Battery pack capacity (Ah)	1.5	1.5
No. of batteries supplied	1	1
Charger supplied	30 min	30 min
Display size (mm)	68	68
Display resolution (pixels)	320 x 240	320 x 240
Camera head diameter (mm)	9	9
Camera cable length (mm)	914	2742
Weight with battery pack (kg)	0.6	0.6
Supplied in	Kitbox	Kitbox
Article Number	4933431250	4933431260

## C12 WS M12™ WALL SCANNER

- Measures depth and location of rebar up to 15 cm through concrete
- Detects location of wood, PEX, PVC and metal
- Intuitive user interface displays stud centres and edges
- High contrast white on black display and backlight for easy reading
- Rugged over-moulding improves durability and user grip
- Auto calibration for all surfaces
- Scans plasterboard, tile, marble, concrete
- Displays stud position
- Flexible battery system: works with all Milwaukee® M12™ batteries



	C12 WS-0
Battery pack capacity (Ah)	-
No. of batteries supplied	0
Charger supplied	-
Weight with battery pack (kg)	0.7
Supplied in	-
Article Number	4933416415

## LDM 60 LASER DISTANCE METER

- Point and shoot system - one person measuring with only one simple press of a button
- Area / volume / indirect height and width measurement
- Min/Max sweep & continuous tracking
- Stake out function for layouting
- Pythagoras 2-point, 3-point
- Calculator plus/minus
- Large and easy to read 3 line LCD graphical display with automatic white backlight
- Fold-out end piece for making measurements from edges or corners
- Memory recall for last 10 measurements
- Units of measure can be switched between meters or ft/inches
- IP54 water & dust protection
- Auto shut off and low power indication
- Nylon pouch with belt latch for easy transport



	LDM 60
Max. measurement range (m)	60
Accuracy (mm/m)	± 1.5
Laser classification	Class 2
Dimensions (mm)	117 x 57 x 32
Range (m)	0.05 - 60
Battery type	2 x AAA
Weight with battery pack (kg)	0.14
Pythagoras function	2-point, 3-point
Inclination sensor	No
Height tracking	No
Supplied in	Tool bag
Article Number	4933446110

## 2205-40 FORK METER FOR ELECTRICIANS

- TRMS always guarantees accurate readings
- High contrast, easy to read display provides clearer readings
- Built-in non-contact voltage detector
- CAT III 1000 V/CAT IV 600 V for increased safety
- Rugged over-moulding for increased durability and grip
- Built-in LED work light – lights the work area
- Side mounted dial for one-handed use
- Simplified user interface and feature set specifically tailored to the electrician
- Supplied with electrical test lead set and 2 x AA batteries



Fork opening (mm)	16
Current AC (amps)	200
Voltage (AC) (V)	1000
Voltage (DC) (V)	1000
Lo-Z measurement	Yes
Resistance ( $\Omega$ )	40 MOhm
Continuity	Audible
Battery type	2 x AA
Weight with battery pack (kg)	0.3
Supplied in	Tool bag
Article Number	4933416972

## 2206-40 FORK METER FOR HVAC/R

- TRMS always guarantees accurate readings
- High contrast, easy to read display provides clearer readings
- Built-in non-contact voltage detector
- CAT III 1000 V/CAT IV 600 V for increased safety
- Rugged over-moulding for increased durability and grip
- Built-in LED work light – lights the work area
- Side mounted dial for one-handed use
- Simplified user interface and feature set specifically tailored to the HVAC technician
- Supplied with electrical test lead set, thermocouple (dual banana) and 2 x AA batteries
- Includes temperature function via thermocouple



Fork opening (mm)	16
Current AC (amps)	200
Voltage (AC) (V)	1000
Voltage (DC) (V)	1000
Resistance ( $\Omega$ )	40 MOhm
Continuity	Audible
Capacitance ( $\mu$ F)	1000
Contact temperature ( $^{\circ}$ C)	-40 $^{\circ}$ C - +400 $^{\circ}$ C
Battery type	2 x AA
Weight with battery pack (kg)	0.3
Supplied in	Tool bag
Article Number	4933416973

## 2216-40 LIGHT COMMERCIAL MULTIMETER

- TRMS always guarantees accurate readings
- CAT III 600 V for increased safety
- Rugged over-moulding increases durability and user grip
- Side mounted dial for one-handed use
- Feature set tailored to electrician – for intuitive use
- Auto range to mV
- Supplied with electrical test lead set and 2 x AA batteries



Current AC/ DC (amps)	10
Voltage (AC) (V)	6.00 mV - 600
Voltage (DC) (V)	600
Lo-Z measurement	No
Resistance ( $\Omega$ )	600.0 Ohm - 40.00 MOhm
Continuity	Yes
Frequency (Hz)	10 Hz - 50 kHz
Battery type	2 x AA
Weight with battery pack (kg)	0.4
Supplied in	–
Article Number	4933427309

## 2217-40 DIGITAL MULTIMETER

- TRMS always guarantees accurate readings
- High contrast, easy to read display provides clearer readings
- Cat III 600 V for increased safety
- Side mounted dial for one-handed use
- Feature set tailored to electrician – for intuitive use
- Lo-Z – always guaranteed accurate readings
- Versatile contact temperature measurement
- Slide rail for accessory mount
- Supplied with electrical test lead set, thermocouple (dual banana) and 2 x AA batteries



Current AC/ DC (amps)	10
Voltage AC/DC (V)	600
Lo-Z measurement	Yes
Resistance ( $\Omega$ )	40 MOhm
Continuity	Audible
Capacitance ( $\mu$ F)	1000
Contact temperature ( $^{\circ}$ C)	-40 $^{\circ}$ C - +538 $^{\circ}$ C
Frequency (Hz)	2.00 HZ - 50.00 kHz
Battery type	2 x AA
Weight with battery pack (kg)	0.4
Supplied in	Tool bag
Article Number	4933416976

**2236-40**  
**CLAMP METER FOR HVAC/R**

- TRMS always guarantees accurate readings
- High contrast, easy to read display provides clearer readings
- Built-in non-contact voltage detector
- CAT III 600 V for increased safety
- Rugged over-moulding for increased durability and grip
- Built-in LED work light – lights the work area
- Side mounted dial for one-handed use
- Thin jaw profile for access to tight spaces
- Simplified user interface and feature set specifically tailored to the HVAC technician
- Supplied with electrical test lead set, thermocouple (dual banana) and 2 x AA batteries
- Includes temperature function via thermocouple



Jaw size (mm)	32
Current AC/ DC (amps)	600
Voltage AC/DC (V)	600
Lo-Z measurement	No
Resistance (Ω)	6 kOhm
Continuity	Audible
Capacitance (µF)	4000
Contact temperature (°C)	-40° C - +400° C
Battery type	2 x AA
Weight with battery pack (kg)	0.4
Supplied in	Tool bag
Article Number	4933416975

**2235-40**  
**LIGHT COMMERCIAL CLAMP METER**

- TRMS always guarantees accurate readings
- CAT III 600 V for increased safety
- Rugged over-moulding increases durability and user grip
- Built-in LED work light – lights the work area
- Side mounted dial for one-handed use
- Thin jaw profile for easier wire measurement in panels or in bundles
- Supplied with electrical test lead set and 2 x AA batteries



Jaw size (mm)	25
AC Amps [A]	400
Voltage AC/DC (V)	600
Lo-Z measurement	No
Resistance (Ω)	40 MOhm
Continuity	Yes
Battery type	2 x AA
Weight with battery pack (kg)	0.3
Supplied in	Tool bag
Article Number	4933427315

**2210-20**  
**FLUORESCENT LIGHT TESTER**

- Test lamps, ballast and pins: complete 3-in-1 solution
- Tests T5, T8 and T12 fluorescent lamps, compatible with electronic ballasts and dual pins
- 750 mm fully retractable antenna for extended reach when testing
- Non-conductive antenna sleeve allows for safe testing
- Removable antenna adapter improves lamp test response
- Visual and audible tool feedback to easily confirm testing
- Built-in LED flashlight illuminates dark work spaces
- Dial and buttons positioned for one-handed use
- Rugged over-moulding for increased grip and durability
- Battery life 35 hours, auto battery turn off after 20 min



Battery type	4 x AA
Max. antenna output in LAMP test mode (V)	3000
Min. antenna sensitivity in BALLAST test mode (mm)	25
Max. PIN test capacity (V)	30
Weight with battery pack (kg)	0.4
Supplied in	-
Article Number	4933433775

**2266-20**  
**LASER TEMPERATURE GUN**

- 12:1 distance to spot ratio, a 1 m spot from 12 m away
- High contrast, easy to read display provides clearer readings
- Rugged over-moulding for increased durability and grip
- Thermocouple input for contact temperature measurement
- AA batteries included



Temperature range	-30 °C - +500 °C
Basic accuracy (%)	1.5
Contact temperature (°C)	-40 °C - +450 °C
Repeatability (%)	0.50
Accuracy (mm/m)	0.1 °C (0.1 °F)
Response time (mS)	<500
Emissivity	0.95
Battery type	3 x AA
Weight with battery pack (kg)	0.3
Supplied in	-
Article Number	4933416971



## M12 BPP2B M12™ POWERPACK

- M12 BPD - M12™ sub compact percussion drill
- M12 BID - M12™ sub compact impact driver



M12 BPP2B-421C

Battery pack capacity (Ah)	1 x 2.0 & 1 x 4.0
No. of batteries supplied	2
Charger supplied	80 min
Supplied in	Kitbox
Article Number	4933446607

## M12 BPP4A M12™ POWERPACK

- M12 BDD - M12™ sub compact drill driver
- M12 BID - M12™ sub compact impact driver
- C12 HZ - M12™ hackzail
- C12 T - M12™ lamp



M12 BPP4A-202B

Battery pack capacity (Ah)	2.0
No. of batteries supplied	2
Charger supplied	40 min
Supplied in	Tool bag
Article Number	4933446605

## M12 PP2A M12 FUEL™ POWER PACK

- M12 CPD - M12 FUEL™ percussion drill
- M12 CID - M12 FUEL™ impact driver



M12 PP2A-402C

Battery pack capacity (Ah)	4.0
No. of batteries supplied	2
Charger supplied	80 min
Supplied in	Kitbox
Article Number	4933441485

# M18 FUEL™

DRIVEN TO OUTPERFORM.™



## POWERSTATE™ BRUSHLESS MOTOR

- Milwaukee® designed and built brushless motor
- Out-performs all leading competitors
- Up to 10x longer motor life



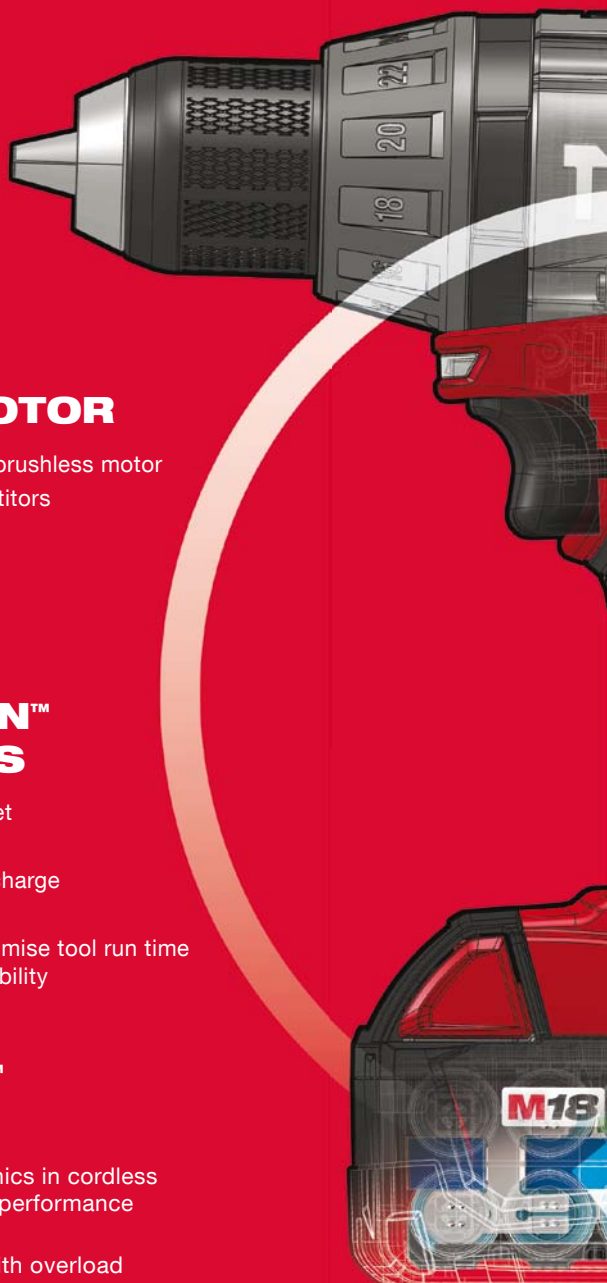
## REDLITHIUM-ION™ BATTERY PACKS

- Most durable pack on the market
- Up to 2x more run time\*
- Fuel gauge displays remaining charge
- Operates down to -20°C
- Individual cell monitoring to optimise tool run time and ensure long term pack durability



## REDLINK PLUS™ INTELLIGENCE

- Most advanced system electronics in cordless power tools with unique digital performance enhancement
- Total system communication with overload protection increases tool life
- Built-in fuel gauge displays remaining charge



UP TO  
**10X**  
LONGER  
MOTOR LIFE\*

UP TO  
**2X**  
MORE  
POWER\*

UP TO  
**2X**  
MORE  
RUN TIME\*



**ALSO AVAILABLE:**



**M18 CPD**  
M18 FUEL™ compact  
percussion drill



**M18 CID**  
M18 FUEL™ 1/4" Hex  
compact impact driver



**M18 CHIWP12**  
M18 FUEL™ 1/2" high  
torque impact wrench  
with pin detent



**M18 CHIWF12**  
M18 FUEL™ 1/2" high  
torque impact wrench  
with friction ring



**M18 CHIWF34**  
M18 FUEL™ 3/4" high  
torque impact wrench  
with friction ring



**M18 CSX**  
M18 FUEL™ SAWZALL®



**M18 CCS55**  
M18 FUEL™ circular saw



**M18 CIW12**  
M18 FUEL™ compact  
1/2" impact wrench



**M18 CIW38**  
M18 FUEL™ compact  
3/8" impact wrench



**M18 CAG-115X**  
M18 FUEL™ 115 mm  
angle grinder

\* Compared with competitive Li-Ion technology and/or previous Milwaukee® battery technology. Results dependent on voltage, tool and application.



Nothing but **HEAVY DUTY.**™

**M18 FUEL**  
DRIVEN TO OUTPERFORM.™

## M18 CPD M18 FUEL™ COMPACT PERCUSSION DRILL

- Milwaukee® designed and built brushless POWERSTATE™ motor for up to 10x longer motor life and up to 25% more power
- REDLINK PLUS™ intelligence system delivers the most advanced digital overload protection for tool and battery and uniquely enhances the tool performance under load
- REDLITHIUM-ION™ battery pack delivers up to 2x more run time, up to 20% more power, up to 2x more battery life and operates better down to -20°C than other lithium-ion technologies
- Individual battery cell monitoring optimises tool run time and ensures long term pack durability
- Battery fuel gauge displays remaining charge
- Brightest LED workspace illumination
- All metal reversible belt clip – quickly and easily hang tool
- Flexible battery system: works with all Milwaukee® M18™ batteries



### M18 CPD-402C

Battery pack capacity (Ah)	4.0
No. of batteries supplied	2
Charger supplied	80 min
No load speed gear 1 (rpm)	0 - 550
No load speed gear 2 (rpm)	0 - 1850
Chuck capacity (mm)	13
Max. drilling wood (mm)	50
Max. drilling steel (mm)	13
Max. drilling masonry (mm)	15
Max. percussion rate (bpm)	31,450
Max. torque (Nm)	80
Weight with battery pack (kg)	2.3
Supplied in	Kitbox
Article Number	4933440540

## M18 CID M18 FUEL™ ¼" HEX COMPACT IMPACT DRIVER

- Milwaukee® designed and built brushless POWERSTATE™ motor for up to 3x longer motor life and up to 20% more power
- REDLINK PLUS™ intelligence system delivers the most advanced digital overload protection for tool and battery and uniquely enhances the tool performance under load
- The Milwaukee® DRIVE CONTROL™ allows the user to shift into three different speed and torque settings to maximize application versatility
- Mode 1 for precision work
- Mode 2 helps prevent damage to fasteners and material
- Mode 3 delivers maximum performance for the toughest applications
- REDLITHIUM-ION™ battery pack delivers up to 2x more run time, up to 20% more power, up to 2x more battery life and operates better down to -20°C than other lithium-ion technologies
- Individual battery cell monitoring optimises tool run time and ensures long term pack durability
- ¼" Hex chuck for quick and easy bit change
- On board fuel gauge and LED light
- All metal reversible belt clip – quickly and easily hang tool
- Flexible battery system: works with all Milwaukee® M18™ batteries



### M18 CID-0

### M18 CID-402C

Battery pack capacity (Ah)	–	4.0
No. of batteries supplied	0	2
Charger supplied	–	80 min
No load speed (rpm)	850/2100/2900	850/2100/2900
Impact rate (ipm)	1750/2850/3600	1750/2850/3600
Max. torque (Nm)	237/9/180	237/9/180
Tool reception	¼" Hex	¼" Hex
Weight with battery pack (kg)	–	1.5
Supplied in	–	Kitbox
Article Number	4933433114	4933440528

## M18 CIW12 M18 FUEL™ COMPACT ½" IMPACT WRENCH

- Milwaukee® designed and built brushless POWERSTATE™ motor for longer motor life and up to 20% more power
- REDLINK PLUS™ intelligence system delivers the most advanced digital overload protection for tool and battery and uniquely enhances the tool performance under load
- The Milwaukee® DRIVE CONTROL™ allows the user to shift into three different speed and torque settings to maximize application versatility
- Mode 1 for precision work
- Mode 2 helps prevent damage to fasteners and material
- Mode 3 delivers maximum performance for the toughest applications
- REDLITHIUM-ION™ battery pack delivers up to 2x more run time, up to 20% more power, up to 2x more battery life and operates better down to -20°C than other lithium-ion technologies
- Individual battery cell monitoring optimises tool run time and ensures long term pack durability
- On board fuel gauge and LED light
- All metal reversible belt clip – quickly and easily hang tool
- Flexible battery system: works with all Milwaukee® M18™ batteries



### M18 CIW12-0

### M18 CIW12-402C

Battery pack capacity (Ah)	–	4.0
No. of batteries supplied	0	2
Charger supplied	–	80 min
No load speed (rpm)	1700/2000/2400	1700/2000/2400
Impact rate (ipm)	2500/3000/3100	2500/3000/3100
Tool reception	½" square	½" square
Max. torque (Nm)	105/160/280	105/160/280
Weight with battery pack (kg)	–	1.8
Supplied in	–	Kitbox
Article Number	4933433134	4933440583









**M18 CIW38**  
**M18 FUEL™ COMPACT 3/8" IMPACT WRENCH**

- Milwaukee® designed and built brushless POWERSTATE™ motor for longer motor life and up to 20% more power
- REDLINK PLUS™ intelligence system delivers the most advanced digital overload protection for tool and battery and uniquely enhances the tool performance under load
- The Milwaukee® DRIVE CONTROL™ allows the user to shift into three different speed and torque settings to maximize application versatility
- Mode 1 for precision work
- Mode 2 helps prevent damage to fasteners and material
- Mode 3 delivers maximum performance for the toughest applications
- REDLITHIUM-ION™ battery pack delivers up to 2x more run time, up to 20% more power, up to 2x more battery life and operates better down to -20°C than other lithium-ion technologies
- Individual battery cell monitoring optimises tool run time and ensures long term pack durability
- On board fuel gauge and LED light
- All metal reversible belt clip – quickly and easily hang tool
- Flexible battery system: works with all Milwaukee® M18™ batteries



	M18 CIW38-0	M18 CIW38-402C
Battery pack capacity (Ah)	–	4.0
No. of batteries supplied	0	2
Charger supplied	–	80 min
No load speed (rpm)	900/1600/2400	900/1600/2400
Impact rate (ipm)	1100/2400/3100	1100/2400/3100
Tool reception	3/8" square	3/8" square
Max. torque (Nm)	40/90/265	40/90/265
Weight with battery pack (kg)	–	1.7
Supplied in	–	Kitbox
Article Number	4933433127	4933440581

**M18 CHIWP12**  
**M18 FUEL™ 1/2" HIGH TORQUE IMPACT WRENCH WITH PIN DETENT**

- At 222 mm in length, the M18 FUEL™ high torque impact wrench delivers superior performance - up to 813 Nm max. fastening torque and up to 1354 Nm nut-busting torque
- Milwaukee® designed and built brushless POWERSTATE™ motor for longer motor life and up to 20% more power
- REDLINK PLUS™ intelligence system delivers the most advanced digital overload protection for tool and battery and uniquely enhances the tool performance under load
- The Milwaukee® DRIVE CONTROL™ allows the user to shift into two different speed and torque settings to maximize application versatility
- REDLITHIUM-ION™ battery pack delivers up to 2x more run time, up to 20% more power, up to 2x more battery life and operates better down to -20°C than other lithium-ion technologies
- Individual battery cell monitoring optimises tool run time and ensures long term pack durability
- 1/2" square detent pin
- On board fuel gauge and LED light
- All metal reversible belt clip – quickly and easily hang tool
- Flexible battery system: works with all Milwaukee® M18™ batteries



	M18 CHIWP12-402C
Battery pack capacity (Ah)	4.0
No. of batteries supplied	2
Charger supplied	80 min
No load speed (rpm)	0 - 1200 / 0 - 1700
Impact rate (ipm)	0 - 1700 / 0 - 2300
Tool reception	1/2" square
Max. fastening torque [Nm]	474 / 813
Nut_busting torque [Nm]	1354
Weight with battery pack (kg)	3.2
Supplied in	Kitbox
Article Number	4933446256

**M18 CHIWF12**  
**M18 FUEL™ 1/2" HIGH TORQUE IMPACT WRENCH WITH FRICTION RING**

- At 228 mm in length, the M18 FUEL™ high torque impact wrench delivers superior performance - up to 950 Nm max. fastening torque and up to 1491 Nm nut-busting torque
- Milwaukee® designed and built brushless POWERSTATE™ motor for longer motor life and up to 20% more power
- REDLINK PLUS™ intelligence system delivers the most advanced digital overload protection for tool and battery and uniquely enhances the tool performance under load
- The Milwaukee® DRIVE CONTROL™ allows the user to shift into two different speed and torque settings to maximize application versatility
- REDLITHIUM-ION™ battery pack delivers up to 2x more run time, up to 20% more power, up to 2x more battery life and operates better down to -20°C than other lithium-ion technologies
- Individual battery cell monitoring optimises tool run time and ensures long term pack durability
- 1/2" square friction ring
- On board fuel gauge and LED light
- All metal reversible belt clip – quickly and easily hang tool
- Flexible battery system: works with all Milwaukee® M18™ batteries



	M18 CHIWF12-402C
Battery pack capacity (Ah)	4.0
No. of batteries supplied	2
Charger supplied	80 min
No load speed (rpm)	0 - 425 / 0 - 1700
Impact rate (ipm)	0 - 450 / 0 - 2300
Tool reception	1/2" square
Max. fastening torque [Nm]	135 / 950
Nut_busting torque [Nm]	1491
Weight with battery pack (kg)	3.3
Supplied in	Kitbox
Article Number	4933446106

**M18 CHIWF34**  
**M18 FUEL™ 3/4" HIGH TORQUE IMPACT WRENCH WITH FRICTION RING**

- At 235 mm in length, the M18 FUEL™ high torque impact wrench delivers superior performance - up to 1016 Nm max. fastening torque and up to 1626 Nm nut-busting torque
- Milwaukee® designed and built brushless POWERSTATE™ motor for longer motor life and up to 20% more power
- REDLINK PLUS™ intelligence system delivers the most advanced digital overload protection for tool and battery and uniquely enhances the tool performance under load
- The Milwaukee® DRIVE CONTROL™ allows the user to shift into two different speed and torque settings to maximize application versatility
- REDLITHIUM-ION™ battery pack delivers up to 2x more run time, up to 20% more power, up to 2x more battery life and operates better down to -20°C than other lithium-ion technologies
- Individual battery cell monitoring optimises tool run time and ensures long term pack durability
- 3/4" square friction ring
- On board fuel gauge and LED light
- All metal reversible belt clip – quickly and easily hang tool
- Flexible battery system: works with all Milwaukee® M18™ batteries



	M18 CHIWF34-402C
Battery pack capacity (Ah)	4.0
No. of batteries supplied	2
Charger supplied	80 min
No load speed (rpm)	0 - 1200 / 0 - 1700
Impact rate (ipm)	0 - 1700 / 0 - 2300
Tool reception	3/4" square
Max. fastening torque [Nm]	508 / 1016
Nut_busting torque [Nm]	1626
Weight with battery pack (kg)	3.3
Supplied in	Kitbox
Article Number	4933446270

# SHOCKWAVE™

## DRIVE GUIDE CASSETTES

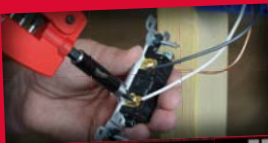
- Slimline pocket design
- Drive Guide bit holder with extendable sleeve to hold long screws secure. Up to 110 mm total length
- Front loading screwdriver handle
- Metal wire stripper for Ø 0.75 / 1.0 / 1.5 / 2.5 mm<sup>2</sup>
- Wire loop maker up to 5 mm<sup>2</sup>

### 12 piece Shockwave drive guide set 1

1x PH2 / 1x PZ1 / 2x PZ2 / 1x PZ3 / 1x TX20 / 1x TX25 / 1x SL 0.6 x 4.5 mm / 1x SL 0.8 x 5.5 mm / 1x Hex 4 / 1x Hex 5 / 1x drive guide bit holder  
75 mm length  
Art. no. 4932352940

### 12 piece Shockwave drive guide set 2

1x PH2 / 1x PZ1 / 2x PZ2 / 1x PZ3 / 1x TX15 / 1x TX20 / 2x TX25 / 1x TX30 / 1x TX40 / 1x drive guide bit holder  
75 mm length. Art. no. 4932352941



## KNUCKLE™

Offset attachment for heavy duty impact applications

- Impact rated. Can be used with both cordless and impact drills
- Very compact offset attachment
- Ideally suited to working in confined and limited spaces
- Solid metal construction to absorb impact action
- 0° and 30° positions
- ¼" Hex shank fits directly into the chuck preventing slippage



### 11 piece Knuckle set – Shockwave Impact Duty™ bits

1x Knuckle™ / 25 mm length: 1x PH1 / 2x PH2 / 1x PZ1 / 2x PZ2 / 1x PZ3 / 1x TX15 / 1x TX20 / 1x TX25. Art. no. 4932352938

\*Height when 30° tilted 40 mm



### 28 pcs Fastening Set

Shockwave Impact Duty™ bits and nut drivers  
Art. no. 4932352455



### 6 pcs HSS-G Drill Bits Set

Shockwave Impact Duty™ drill bits with ¼" Hex shank  
Contents:  
Ø 3 / 4 / 5 / 6 / 7 / 8 mm  
Art. no. 4932352454



### 30 piece Shockwave compact drill & drive set

Shockwave Impact Duty™ drill bits and screwdriving bits  
Art. no. 4932352894



### Shockwave Impact Duty™ sockets set

Shockwave Impact Duty™ sockets  
10 piece ½" Art. no. 4932352861  
20 piece ¼" Art. no. 4932352862



### 15 pcs Compact Screwdriving Set

Shockwave Impact Duty™ bits  
Art. no. 4932352604



### 5 pcs Nut Drivers Set

Shockwave Impact Duty™ nut drivers  
Art. no. 4932352822



### Screwdriving Range

available in 25 mm, 50 mm, 90 mm length as 1/2 pcs, 25 pcs packs in Phillips, Pozidrive, Torx and Hex



**Compression Forged Tip**  
Ideal fit and reduces breakage



**Shock Zone Geometry™**  
Designed to flex with spring-like action  
Reduces stress at the tip



**Custom Engineered Steel & Heat Treatment**  
High shock resistance

**IMPACT**

max **10x**  
**LIFE**

**SHOCKWAVE**  **IMPACT DUTY**™

## M18 CSX

### M18 FUEL™ SAWZALL®

- Milwaukee® designed and built brushless POWERSTATE™ motor for up to 5x longer motor life, up to 30% faster cutting and up to 25% more power
- REDLINK PLUS™ intelligence system delivers the most advanced digital overload protection for tool and battery and uniquely enhances the tool performance under load
- REDLITHIUM-ION™ battery pack delivers up to 2x more run time, up to 20% more power, up to 2x more battery life and operates better down to -20°C than other lithium-ion technologies
- Individual battery cell monitoring optimises tool run time and ensures long term pack durability
- Patented gear protecting clutch - extends gear and motor life by absorbing high impact forces caused by sudden blade lock-ups
- FIXTEC blade clamp for fast and easy blade changes without any key
- Adjustable shoe for optimised use of saw blades
- Integrated battery fuel gauge & LED light
- Hang hook
- Flexible battery system: works with all Milwaukee® M18™ batteries



	M18 CSX-0	M18 CSX-402C
Battery pack capacity (Ah)	-	4.0
No. of batteries supplied	0	2
Charger supplied	-	80 min
No load stroke rate (spm)	0 - 3000	0 - 3000
Stroke length (mm)	28.6	28.6
Weight with battery pack (kg)	-	3.4
Supplied in	-	Kitbox
Article Number	4933446085	4933446080

## M18 CCS55

### M18 FUEL™ CIRCULAR SAW

- Milwaukee® designed and built brushless POWERSTATE™ motor for up to 3x longer motor life, up to 2x more cuts per charge and up to 25% more power
- REDLINK PLUS™ intelligence system delivers the most advanced digital overload protection for tool and battery and uniquely enhances the tool performance under load
- REDLITHIUM-ION™ battery pack delivers up to 2x more run time, up to 20% more power, up to 2x more battery life and operates better down to -20°C than other lithium-ion technologies
- Individual battery cell monitoring optimises tool run time and ensures long term pack durability
- 50° bevel capacity
- Magnesium upper and lower guards provide best in class durability for impact resistance
- Magnesium shoe reduces weight and maximizes durability
- Integrated dust blower keeps cut line clear
- Hang hook allows safe storage of the tool
- Integrated battery fuel gauge & LED light
- Flexible battery system: works with all Milwaukee® M18™ batteries



	M18 CCS55-0	M18 CCS55-402C
Battery pack capacity (Ah)	-	4.0
No. of batteries supplied	0	2
Charger supplied	-	80 min
No load speed (rpm)	5000	5000
Max. cutting depth 90° (mm)	55	55
Max. cutting depth 45° (mm)	41	41
Blade diameter (mm)	165	165
Bore size (mm)	20	20
Weight with battery pack (kg)	-	3.2
Supplied in	-	Kitbox
Article Number	4933446223	4933446235

## M18 CAG-115X

### M18 FUEL™ 115 MM ANGLE GRINDER

- Milwaukee® designed and built brushless POWERSTATE™ motor for 10x more motor life and up to 25% more run time with power to grind
- REDLINK PLUS™ intelligence system delivers the most advanced digital overload protection for tool and battery and uniquely enhances the tool performance under load
- REDLITHIUM-ION™ battery pack delivers up to 2x more run time, up to 20% more power, up to 2x more battery life and operates better down to -20°C than other lithium-ion technologies
- Premium gearing system - same system as used at high performance corded grinders
- 115 mm keyless guard - great cutting capacity and fast guard adjustment without using a spanner
- 100% tool-free wheel change thanks to integrated FIXTEC system
- Slimmest handle design available on market
- Removable dust screen to prevent debris entrance, prolonging motor life
- Individual battery cell monitoring optimises tool run time and ensures long term pack durability
- Fuel gauge displays remaining charge
- Flexible battery system: works with all Milwaukee® M18™ batteries



	M18 CAG-115X-0	M18 CAG-115X-402C
Battery pack capacity (Ah)	-	4.0
No. of batteries supplied	0	2
Charger supplied	-	80 min
No. of batteries supplied	0	2
No load speed (rpm)	8500	8500
Disc diameter (mm)	115	115
Cutting depth (mm)	28	28
Spindle size	M 14	M 14
Weight with battery pack (kg)	1.8	2.2
Supplied in	-	Kitbox
Article Number	4933443925	4933443955

## M18 BPD

### M18™ COMPACT PERCUSSION DRILL

- Compact percussion drill measuring only 198 mm in length, making it ideal for working in confined spaces
- Milwaukee®'s high performance 4-pole motor delivers maximum power whilst maximising the power to weight ratio
- REDLINK™ overload protection electronics in tool and battery pack deliver best in class system durability
- Full metal gear box delivers maximum performance and long life
- 13 mm metal chuck for quick bit changes and bit retention
- 18 stage torque adjustment for maximum flexibility
- 3 stage mode selector allows the user to switch between "rotary", "screw drive" and "percussion" modes quickly and easily
- Individual battery cell monitoring optimises tool run time and ensures long term pack durability
- On board fuel gauge and LED light
- REDLITHIUM-ION™ battery pack delivers up to 2x more run time, up to 20% more power, up to 2x more battery life and operates better down to -20°C than other lithium-ion technologies
- Flexible battery system: works with all Milwaukee® M18™ batteries



	M18 BPD-402C
Battery pack capacity (Ah)	4.0
No. of batteries supplied	2
Charger supplied	80 min
No load speed gear 1 (rpm)	0 - 450
No load speed gear 2 (rpm)	0 - 1800
Chuck capacity (mm)	13
Max. drilling wood (mm)	38
Max. drilling steel (mm)	13
Max. drilling masonry (mm)	16
Max. percussion rate (bpm)	0 - 28,800
Max. torque (Nm)	60
Weight with battery pack (kg)	2.1
Supplied in	Kitbox
Article Number	4933443518

## M18 BDD M18™ COMPACT DRILL DRIVER

- Compact drill driver measuring only 185 mm in length, making it ideal for working in confined spaces
- Milwaukee®'s high performance 4-pole motor delivers maximum power whilst maximising the power to weight ratio
- REDLINK™ overload protection electronics in tool and battery pack deliver best in class system durability
- Full metal gear box delivers maximum performance and long life
- 13 mm metal chuck for quick bit changes and bit retention
- 17 stage torque adjustment plus additional drilling for maximum flexibility
- Individual battery cell monitoring optimises tool run time and ensures long term pack durability
- Fuel gauge displays remaining charge
- Brightest LED workspace illumination
- REDLITHIUM-ION™ battery pack delivers up to 2x more run time, up to 20% more power, up to 2x more battery life and operates better down to -20°C than other lithium-ion technologies
- Flexible battery system: works with all Milwaukee® M18™ batteries



	M18 BDD-202C
Battery pack capacity (Ah)	2.0
No. of batteries supplied	2
Charger supplied	40 min
No load speed gear 1 (rpm)	0 - 450
No load speed gear 2 (rpm)	0 - 1800
Chuck capacity (mm)	13
Max. drilling wood (mm)	38
Max. drilling steel (mm)	13
Max. torque (Nm)	50
Weight with battery pack (kg)	1.8
Supplied in	Kitbox
Article Number	4933443558

## M18 BID M18™ COMPACT IMPACT DRIVER

- Compact impact driver measures 140 mm in length making it ideal for working within confined spaces
- Milwaukee® high performance 4-pole motor delivers maximum power whilst maximising the power to weight ratio
- REDLINK™ overload protection electronics in tool and battery pack deliver best in class system durability
- Heavy duty full metal gearbox and gears for superior durability and maximum torque
- 1/4" Hex drive with click lock for single hand loading of bit
- Individual battery cell monitoring optimises tool run time and ensures long term pack durability
- On board fuel gauge and LED light
- REDLITHIUM-ION™ battery pack delivers up to 2x more run time, up to 20% more power, up to 2x more battery life and operates better down to -20°C than other lithium-ion technologies
- Flexible battery system: works with all Milwaukee® M18™ batteries



	M18 BID-0	M18 BID-202C
Battery pack capacity (Ah)	-	2.0
No. of batteries supplied	0	2
Charger supplied	-	40 min
No load speed (rpm)	0 - 2000 / 0 - 2750	0 - 2000 / 0 - 2750
Impact rate (ipm)	0 - 2450 / 0 - 3450	0 - 2450 / 0 - 3450
Tool reception	1/4" Hex	1/4" Hex
Max. torque (Nm)	180	180
Weight with battery pack (kg)	-	1.4
Supplied in	-	Kitbox
Article Number	4933443570	4933443578

## M18 BIW12 M18™ COMPACT 1/2" IMPACT WRENCH

- Compact 1/2" impact wrench measures 155 mm in length making it ideal for working within confined spaces
- Milwaukee® high performance 4-pole motor delivers maximum power whilst maximising the power to weight ratio
- REDLINK™ overload protection electronics in tool and battery pack deliver best in class system durability
- Heavy duty full metal gearbox and gears for superior durability and maximum torque
- 1/2" square drive for use with universal sockets
- Individual battery cell monitoring optimises tool run time and ensures long term pack durability
- On board fuel gauge and LED light
- REDLITHIUM-ION™ battery pack delivers up to 2x more run time, up to 20% more power, up to 2x more battery life and operates better down to -20°C than other lithium-ion technologies
- Flexible battery system: works with all Milwaukee® M18™ batteries



	M18 BIW12-0	M18 BIW12-202C
Battery pack capacity (Ah)	-	2.0
No. of batteries supplied	0	2
Charger supplied	-	40 min
No load speed (rpm)	0 - 2450	0 - 2450
Tool reception	1/2" square	1/2" square
Impact rate (ipm)	0 - 3350	0 - 3350
Max. torque (Nm)	240	240
Weight with battery pack (kg)	-	1.6
Supplied in	-	Kitbox
Article Number	4933443590	4933443583

## M18 BIW38 M18™ COMPACT 3/8" IMPACT WRENCH

- Compact 3/8" impact wrench measures 152 mm in length making it ideal for working within confined spaces
- REDLINK™ overload protection electronics in tool and battery pack deliver best in class system durability
- Heavy duty full metal gearbox and gears for superior durability and maximum torque
- 3/8" square drive for use with universal sockets
- Individual battery cell monitoring optimises tool run time and ensures long term pack durability
- On board fuel gauge and LED light
- REDLITHIUM-ION™ battery pack delivers up to 2x more run time, up to 20% more power, up to 2x more battery life and operates better down to -20°C than other lithium-ion technologies
- Flexible battery system: works with all Milwaukee® M18™ batteries



	M18 BIW38-0	M18 BIW38-202C
Battery pack capacity (Ah)	-	2.0
No. of batteries supplied	0	2
Charger supplied	-	40 min
No load speed (rpm)	0 - 2450	0 - 2450
Tool reception	3/8" square	3/8" square
Impact rate (ipm)	0 - 3350	0 - 3350
Max. torque (Nm)	210	210
Weight with battery pack (kg)	-	1.6
Supplied in	-	Kitbox
Article Number	4933443600	4933446201



## M18 BH

### M18™ COMPACT SDS HAMMER

- Superior power to weight ratio in its class 1.9 kg 1.2 J EPTA
- Milwaukee's high performance 4-pole motor delivers maximum power whilst maximising the power to weight ratio
- REDLINK™ overload protection electronics in tool and battery pack deliver best in class system durability
- 2-mode operation: choose rotary hammer or rotation only for maximum versatility
- Low vibration value of 10 m/s<sup>2</sup>
- Optimised hammer drilling from 4 to 10 mm, max diameter 16 mm
- Forward & reverse switch for added versatility in fastening applications
- 43 mm neck size - compatible with M12 DE dust extractor
- Fuel gauge displays remaining charge
- Brightest LED workspace illumination
- REDLITHIUM-ION™ battery pack delivers up to 2x more run time, up to 20% more power, up to 2x more battery life and operates better down to -20°C than other lithium-ion technologies
- Flexible battery system: works with all Milwaukee® M18™ batteries



	M18 BH-0	M18 BH-402C
Battery pack capacity (Ah)	-	4.0
No. of batteries supplied	0	2
Charger supplied	-	80 min
Tool reception	SDS-Plus	SDS-Plus
Blow energy [EPTA][J]	1.2	1.2
Max. drilling wood (mm)	16	16
Max. drilling steel (mm)	10	10
Max. drilling concrete (mm)	16	16
Max. percussion rate (bpm)	6100	6100
Vibration drilling (m/s <sup>2</sup> )	10	10
Weight with battery pack (kg)	-	1.9
Supplied in	-	Kitbox
Article Number	4933443320	4933443334

## C18 RAD

### M18™ RIGHT ANGLE DRILL

- Optimised performance: 1500 rpm at 20 Nm
- REDLINK™ overload protection electronics in tool and battery pack deliver best in class system durability
- Perfect speed to power ratio for fast application completion
- 10 mm single sleeve ratcheting chuck provides maximum versatility and grip
- 100 mm compact head designed to fit in the tightest work areas
- Multi-position handle design allows for multiple hand positions and maximum comfort
- 10 + 1 electronic clutch enables complete control while fastening
- Individual battery cell monitoring optimises tool run time and ensures long term pack durability
- Fuel gauge displays remaining charge
- Built in LED light illuminates the work surface
- REDLITHIUM-ION™ battery pack delivers up to 2x more run time, up to 20% more power, up to 2x more battery life and operates better down to -20°C than other lithium-ion technologies
- Flexible battery system: works with all Milwaukee® M18™ batteries



	C18 RAD-0	C18 RAD-31C
Battery pack capacity (Ah)	-	3.0
No. of batteries supplied	0	1
Charger supplied	-	60 min
No load speed (rpm)	0 - 1500	0 - 1500
Chuck capacity (mm)	10	10
Max. torque (Nm)	20	20
Max. drilling wood (mm)	28	28
Max. drilling steel (mm)	10	10
Weight with battery pack (kg)	-	1.9
Supplied in	-	Kitbox
Article Number	4933427189	4933427188

## M18 BMT

### M18™ MULTI-TOOL

- Versatile cordless solution for cutting and removal applications
- REDLINK™ overload protection electronics in tool and battery pack deliver best in class system durability
- Variable speed (12,000 - 18,000 rpm) and 1.7° left/right oscillation movement allows quick completion of professional applications into materials such as metal, wood and plastic
- Will accept competitor accessories
- Individual battery cell monitoring optimises tool run time and ensures long term pack durability
- FIXTEC tool free blade change, universal adaptor included
- Fuel gauge displays remaining charge
- Brightest LED workspace illumination
- REDLITHIUM-ION™ battery pack delivers up to 2x more run time, up to 20% more power, up to 2x more battery life and operates better down to -20°C than other lithium-ion technologies
- Flexible battery system: works with all Milwaukee® M18™ batteries



	M18 BMT-0	M18 BMT-421C
Battery pack capacity (Ah)	-	1 x 2.0 & 1 x 4.0
No. of batteries supplied	0	2
Charger supplied	-	80 min
Oscillation angle left/ right (°)	1.7	1.7
No load speed (rpm)	12,000 - 18,000	12,000 - 18,000
Weight with battery pack (kg)	-	1.7
Supplied in	-	Kitbox
Article Number	4933446203	4933446272





## HD18 HIW M18™ HEAVY DUTY IMPACT WRENCH

- The most powerful 18 V cordless impact wrench on the market
- With its Milwaukee® 4-pole frameless motor it delivers a staggering 610 Nm of torque, ideal for powering through the toughest of applications
- REDLINK™ overload protection electronics in tool and battery pack deliver best in class system durability
- ½" square drive with detent pin for secure socket retention
- Ideal for heavy applications such as steel fabrication, mechanical fastening, industrial construction and automotive work
- Light weight and ergonomically designed
- Individual battery cell monitoring optimises tool run time and ensures long term pack durability
- Fuel gauge displays remaining charge
- REDLITHIUM-ION™ battery pack delivers up to 2x more run time, up to 20% more power, up to 2x more battery life and operates better down to -20°C than other lithium-ion technologies
- Flexible battery system: works with all Milwaukee® M18™ batteries



	HD18 HIW-402C
Battery pack capacity (Ah)	4.0
No. of batteries supplied	2
Charger supplied	80 min
No load speed (rpm)	0 - 1900
Tool reception	½" square
Impact rate (ipm)	0 - 2200
Max. torque (Nm)	610
Friction ring	No
Weight with battery pack (kg)	3.0
Supplied in	Kitbox
Article Number	4933441263

## HD18 HIWF M18™ HEAVY DUTY IMPACT WRENCH WITH FRICTION RING

- The most powerful 18 V cordless impact wrench on the market
- With its Milwaukee® 4-pole frameless motor it delivers a staggering 610 Nm of torque, ideal for powering through the toughest of applications
- REDLINK™ overload protection electronics in tool and battery pack deliver best in class system durability
- ½" square friction ring
- Ideal for heavy applications such as steel fabrication, mechanical fastening, industrial construction and automotive work
- Light weight and ergonomically designed
- Individual battery cell monitoring optimises tool run time and ensures long term pack durability
- Fuel gauge displays remaining charge
- REDLITHIUM-ION™ battery pack delivers up to 2x more run time, up to 20% more power, up to 2x more battery life and operates better down to -20°C than other lithium-ion technologies
- Flexible battery system: works with all Milwaukee® M18™ batteries



	HD18 HIWF-402C
Battery pack capacity (Ah)	4.0
No. of batteries supplied	2
Charger supplied	80 min
No load speed (rpm)	0 - 1900
Tool reception	½" square
Impact rate (ipm)	0 - 2200
Max. torque (Nm)	610
Weight with battery pack (kg)	3.0
Supplied in	Kitbox
Article Number	4933441792

## HD18 HX M18™ COMPACT 3-MODE SDS HAMMER DRILL

- High powered motor gives corded tool performance
- REDLINK™ overload protection electronics in tool and battery pack deliver best in class system durability
- Powerful hammer mechanism: delivers 2.4 J of impact energy
- All metal gear case - optimum seating of the gears for enhanced service life
- 4-mode operation: rotary hammer, hammer only, rotation only and variolock for maximum versatility
- Variolock and hammer stop function
- FIXTEC system - keyless chuck changing
- Mechanical clutch: protects tool when bit binds up
- Anti-Vibration-System delivers max. comfort by minimizing vibration
- Individual battery cell monitoring optimises tool run time and ensures long term pack durability
- Fuel gauge displays remaining charge
- REDLITHIUM-ION™ battery pack delivers up to 2x more run time, up to 20% more power, up to 2x more battery life and operates better down to -20°C than other lithium-ion technologies
- Flexible battery system: works with all Milwaukee® M18™ batteries



	HD18 HX-0	HD18 HX-402C
Battery pack capacity (Ah)	-	4.0
No. of batteries supplied	0	2
Charger supplied	-	80 min
Tool reception	SDS-Plus	SDS-Plus
Blow energy [EPTA][J]	2.4	2.4
Max. drilling wood (mm)	30	30
Max. drilling steel (mm)	13	13
Max. drilling concrete (mm)	24	24
Max. percussion rate (bpm)	4200	4200
Weight with battery pack (kg)	-	3.7
Supplied in	-	Kitbox
Article Number	4933408320	4933441283

## HD18 JSB M18™ HEAVY DUTY BODY GRIP JIGSAW

- Milwaukee® 4-pole frameless motor delivers 2700 rpm for fast cutting
- REDLINK™ overload protection electronics in tool and battery pack deliver best in class system durability
- Soft start & 2-speed selector switch for ideal speed in different materials
- Patented FIXTEC system for fast keyless blade change and bevel adjustment with snap-in at 0° and 45°
- 4 stage pendulum action for increased performance
- Adjustable saw dust blower
- Exact saw blade guidance with large blade support roller on needle bearings fitted in a very low position
- Die-cast base plate for high durability
- Individual battery cell monitoring optimises tool run time and ensures long term pack durability
- Fuel gauge displays remaining charge
- REDLITHIUM-ION™ battery pack delivers up to 2x more run time, up to 20% more power, up to 2x more battery life and operates better down to -20°C than other lithium-ion technologies
- Flexible battery system: works with all Milwaukee® M18™ batteries



	HD18 JSB-0	HD18 JSB-402C
Battery pack capacity (Ah)	-	4.0
No. of batteries supplied	0	2
Charger supplied	-	80 min
No load stroke rate (spm)	2050 / 2700	2050 / 2700
Max. cutting capacity wood (mm)	120	120
Max. cutting capacity steel (mm)	10	10
Mitre capacity (°)	45	45
Stroke length (mm)	26	26
Weight with battery pack (kg)	-	2.9
Supplied in	-	Kitbox
Article Number	4933417845	4933426660

## HD18 SX M18™ HEAVY DUTY SAWZALL® WITH GEAR PROTECTION CLUTCH

- Milwaukee®'s high performance 4-pole motor delivers maximum power whilst maximising the power to weight ratio
- REDLINK™ overload protection electronics in tool and battery pack deliver best in class system durability
- Milwaukee® patented FIXTEC clamp for fast and easy keyless blade change
- Gear protection clutch - protects the gearbox in case of blade lock ups
- Counter balance mechanism to reduce vibrations
- 25 mm stroke length & 3200 strokes per minute for extremely fast cutting
- Fuel gauge displays remaining charge
- REDLITHIUM-ION™ battery pack delivers up to 2x more run time, up to 20% more power, up to 2x more battery life and operates better down to -20°C than other lithium-ion technologies
- Flexible battery system: works with all Milwaukee® M18™ batteries



	HD18 SX-0	HD18 SX-402C
Battery pack capacity (Ah)	-	4.0
No. of batteries supplied	0	2
Charger supplied	-	80 min
No load stroke rate (spm)	0 - 3200	0 - 3200
Stroke length (mm)	25	25
Weight with battery pack (kg)	-	4.0
Supplied in	-	Kitbox
Article Number	4933419131	4933441365

## C18 HZ M18™ COMPACT ONE-HANDED HACKZALL

- Milwaukee® high performance compact one handed use hacksaw, measuring only 375 mm in length, makes it ideal for working within confined spaces
- REDLINK™ overload protection electronics in tool and battery pack deliver best in class system durability
- Dual gear counter balance reduces vibration and increases tool life
- Milwaukee® patented FIXTEC clamp for fast keyless blade change
- 20 mm stroke length for controlled cutting with a no load stroke rate of 3000 spm
- Individual battery cell monitoring optimises tool run time and ensures long term pack durability
- Fuel gauge displays remaining charge
- Built in LED light illuminates the work surface
- REDLITHIUM-ION™ battery pack delivers up to 2x more run time, up to 20% more power, up to 2x more battery life and operates better down to -20°C than other lithium-ion technologies
- Flexible battery system: works with all Milwaukee® M18™ batteries



	C18 HZ-0	C18 HZ-402B
Battery pack capacity (Ah)	-	4.0
No. of batteries supplied	0	2
Charger supplied	-	80 min
No load stroke rate (spm)	0 - 3000	0 - 3000
Stroke length (mm)	20	20
Weight with battery pack (kg)	-	2.5
Supplied in	-	Tool bag
Article Number	4933416785	4933443016

## HD18 CS M18™ HEAVY DUTY CIRCULAR SAW FOR WOOD AND PLASTIC

- Milwaukee® powerful 3500 rpm motor easily cuts most timber construction materials
- REDLINK™ overload protection electronics in tool and battery pack deliver best in class system durability
- Large 50° bevel facility
- Magnesium upper and lower guards provide best in class durability for impact resistance
- Excellent visibility of cutting line
- Electronic motor brake, saw blade stops within seconds
- Individual battery cell monitoring optimises tool run time and ensures long term pack durability
- Fuel gauge displays remaining charge
- REDLITHIUM-ION™ battery pack delivers up to 2x more run time, up to 20% more power, up to 2x more battery life and operates better down to -20°C than other lithium-ion technologies
- Flexible battery system: works with all Milwaukee® M18™ batteries
- Supplied with 24 tooth saw blade, parallel guide, dust port and allen key



	HD18 CS-0	HD18 CS-402B
Battery pack capacity (Ah)	-	4.0
No. of batteries supplied	0	2
Charger supplied	-	80 min
No load speed (rpm)	3500	3500
Max. cutting depth 90° (mm)	55	55
Max. cutting depth 45° (mm)	39	39
Blade diameter (mm)	165	165
Bore size (mm)	15.87	15.87
Weight with battery pack (kg)	-	3.8
Supplied in	-	Tool bag
Article Number	4933419134	4933441403

## HD18 MS M18™ METAL SAW

- Milwaukee® 4-pole frameless motor delivers 3600 rpm for fast cutting
- REDLINK™ overload protection electronics in tool and battery pack deliver best in class system durability
- Compact, ergonomic design provides superior control over standard metal saws, reciprocating saws and band saws
- Tool-free depth adjustment quickly and easily adjusts cutting depth from 3 mm - 50 mm with a 135 mm blade
- Individual battery cell monitoring optimises tool run time and ensures long term pack durability
- Built in LED light illuminates the work surface
- Fuel gauge displays remaining charge
- REDLITHIUM-ION™ battery pack delivers up to 2x more run time, up to 20% more power, up to 2x more battery life and operates better down to -20°C than other lithium-ion technologies
- Flexible battery system: works with all Milwaukee® M18™ batteries



	HD18 MS-0	HD18 MS-402B
Battery pack capacity (Ah)	-	4.0
No. of batteries supplied	0	2
Charger supplied	-	80 min
No load speed (rpm)	3600	3600
Blade diameter (mm)	135	135
Bore size (mm)	20	20
Max. cutting capacity in steel plate (mm)	1.6	1.6
Max. cutting capacity metal pipe	50	50
Max. cutting capacity sections (mm)	51	51
Weight with battery pack (kg)	-	2.6
Supplied in	-	Tool bag
Article Number	4933427187	4933441390

## HD18 AG-115

### M18™ HEAVY DUTY 115 MM ANGLE GRINDER

- Milwaukee™'s high performance 4-pole motor delivers maximum power whilst (optimising) maximising the power to weight ratio
- REDLINK™ overload protection electronics in tool and battery pack deliver best in class system durability
- Full metal gear case delivers heavy duty durability
- Reduced height of gear box and slim girth design deliver optimum ergonomics
- Non lockable switch for best user protection and preventing automatic start up
- Burst resistant and tool-free safety guard for best user protection and fast adjustment
- Multi position side handle for ease of use
- Individual battery cell monitoring optimises tool run time and ensures long term pack durability
- Fuel gauge displays remaining charge
- REDLITHIUM-ION™ battery pack delivers up to 2x more run time, up to 20% more power, up to 2x more battery life and operates better down to -20°C than other lithium-ion technologies
- Flexible battery system: works with all Milwaukee® M18™ batteries



	HD18 AG-115-0	HD18 AG-115-402C
No. of batteries supplied	0	2
Charger supplied	–	80 min
No load speed (rpm)	9000	9000
Disc diameter (mm)	115	115
Cutting depth (mm)	28	28
Spindle size	M 14	M 14
Weight with battery pack (kg)	–	2.4
Supplied in	–	Kitbox
Article Number	4933411210	4933441303

## HD18 BS

### M18™ HEAVY DUTY METAL BANDSAW

- 4.8 kg compact light weight design for cutting overhead and in tight places
- REDLINK™ overload protection electronics in tool and battery pack deliver best in class system durability
- 85 mm cut capacity – cuts most common materials
- Tool-free adjustable material shoe – quickly adjusts the shoe and allows flush cuts when working with installed materials against walls and ceilings
- Blade ejection system – quickly change the blade by moving the material guide into the up position and depressing the blade ejection button
- Individual battery cell monitoring optimises tool run time and ensures long term pack durability
- On board fuel gauge and LED light
- REDLITHIUM-ION™ battery pack delivers up to 2x more run time, up to 20% more power, up to 2x more battery life and operates better down to -20°C than other lithium-ion technologies
- Flexible battery system: works with all Milwaukee® M18™ batteries



	HD18 BS-0	HD18 BS-402C
Battery pack capacity (Ah)	–	4.0
No. of batteries supplied	0	2
Charger supplied	–	80 min
No load speed (rpm)	146	146
Cutting capacity rect. stock (mm)	85 x 85	85 x 85
Blade length (mm)	880	880
Weight with battery pack (kg)	–	4.8
Supplied in	–	Kitbox
Article Number	4933419122	4933441415

## M18 VC

### M18™ CORDLESS 7.5 L WET/ DRY VACUUM

- Powerful 18 V motor with a maximum air flow of 1246 l/min / 80 bar suction power
- HEPA rated 99.7 % high efficiency wet/dry filter: for fine dust collection
- Built-in blower: provides 21 V/sec of air flow for maximum efficiency
- 7.5 l capacity: reduces downtime to emptying
- Stackable tool box design: for added portability and easier storage
- On-board accessory and hose storage: quick access to accessories
- Flexible battery system: works with all Milwaukee® M18™ batteries
- Supplied with washable filter, hose, crevice tool and utility nozzle



	M18 VC-0
Battery pack capacity (Ah)	–
No. of batteries supplied	0
Charger supplied	–
Capacity solids (l)	9.65
Capacity liquids (l)	7.5
Hose diameter (mm)	31.5 / 41.7
Hose length (m)	1.8
Max. vacuum (mbar)	80
Air volume (l/min)	1246
Filter type	Wet/Dry
Weight with battery pack (kg)	5.4
Supplied in	–
Article Number	4933433601

## C12-28 DCR

### M12™ - M28™ RADIO WITH MP3 PLAYER CONNECTION

- Exclusive AM/FM tuner with digital processor delivers highest reception accuracy and signal clarity
- Premium speakers and 40 W amplifier produce rich, full sound
- Weather sealed auxiliary compartment protects MP3 players and other audio devices
- Shock absorbing ABS polymer and steel construction protects against abusive jobsite conditions
- Customisable equaliser and 10-station preset
- Powered by M12™, M14™, M18™, M28™, V18, V28 & PBS 3000 batteries on a mains AC outlet
- Supplied with 220 - 240 V power adapter, 3.5 mm jack plug for auxiliary connection i.e iPods



	C12-28 DCR-0
Voltage (DC) (V)	12 - 28
Voltage (AC) (V)	220 - 240
Battery type	Li-ion & PBS 3000
Battery pack capacity (Ah)	–
No. of batteries supplied	0
Charger supplied	–
Dimensions (mm)	495 x 241 x 279
Weight (kg)	7.3
Supplied in	–
Article Number	4933410665

## M18 GG M18™ GREASE GUN

- Powerful 18 V motor delivers over 562 bar max operating pressure
- REDLINK™ overload protection electronics in tool and battery pack deliver best in class system durability
- Best in class run time - dispenses up to 7 cartridges per charge
- Superior handle balance and ergonomics - only 355 mm long and 3.9 kg
- Air bleeder valve - priming mechanism for quick flow
- Integrated hose storage, shoulder strap loop and LED fuel gauge - added user convenience and less down time
- Three way loading - bulk, cartridge and suction capable
- Grease capacity 400 ml cartridge, 473 ml bulk
- Individual battery cell monitoring optimises tool run time and ensures long term pack durability
- REDLITHIUM-ION™ battery pack delivers up to 2x more run time, up to 20% more power, up to 2x more battery life and operates better down to -20°C than other lithium-ion technologies
- Flexible battery system: works with all Milwaukee® M18™ batteries
- 1219 mm high pressure flex hose with spring guard



	M18 GG-0
Battery pack capacity (Ah)	—
No. of batteries supplied	0
Charger supplied	—
Pressure (bar)	562
Weight with battery pack (kg)	—
Supplied in	—
Article Number	4933440493

## C18 PCG/600 M18™ CAULK GUN WITH 600 ML TUBE

- Up to 4500 N of force. Min 40% higher than current Milwaukee® caulk gun
- REDLINK™ overload protection electronics in tool and battery pack deliver best in class system durability
- Optimised performance with all adhesives and cool temperatures
- Anti-drip feature prevents unwanted dripping when trigger is released
- Dial control with 6 speed settings allows for maximum bead control
- Large robust plunger design ensures constant flow, reduces blow back and expels all sealant from cartridge
- Individual battery cell monitoring optimises tool run time and ensures long term pack durability
- On board fuel gauge and LED light
- REDLITHIUM-ION™ battery pack delivers up to 2x more run time, up to 20% more power, up to 2x more battery life and operates better down to -20°C than other lithium-ion technologies
- Flexible battery system: works with all Milwaukee® M18™ batteries



	C18 PCG/600A-201B	C18 PCG/600T-201B
Battery pack capacity (Ah)	2.0	2.0
No. of batteries supplied	1	1
Charger supplied	40 min	40 min
Max. pushing force (N)	4500	4500
Speed settings	6	6
Standard equipment	600 ml aluminium	600 ml transparent
Weight with battery pack (kg)	2.3	2.3
Supplied in	Tool bag	Tool bag
Article Number	4933441305	4933441808

## C18 PCG/400 M18™ CAULK GUN WITH 400 ML TUBE

- Up to 4500 N of force. Min 40% higher than current Milwaukee® caulk gun
- REDLINK™ overload protection electronics in tool and battery pack deliver best in class system durability
- Optimised performance with all adhesives and cool temperatures
- Anti-drip feature prevents unwanted dripping when trigger is released
- Dial control with 6 speed settings allows for maximum bead control
- Large robust plunger design ensures constant flow, reduces blow back and expels all sealant from cartridge
- Individual battery cell monitoring optimises tool run time and ensures long term pack durability
- On board fuel gauge and LED light
- REDLITHIUM-ION™ battery pack delivers up to 2x more run time, up to 20% more power, up to 2x more battery life and operates better down to -20°C than other lithium-ion technologies
- Flexible battery system: works with all Milwaukee® M18™ batteries



	C18 PCG/400T-201B
Battery pack capacity (Ah)	2.0
No. of batteries supplied	1
Charger supplied	40 min
Max. pushing force (N)	4500
Speed settings	6
Standard equipment	400 ml transparent tube
Weight with battery pack (kg)	2.3
Supplied in	Tool bag
Article Number	4933441812

## C18 PCG/310 M18™ CAULK GUN WITH 310 ML CANISTER

- Up to 4500 N of force. Min 40% higher than current Milwaukee® caulk gun
- REDLINK™ overload protection electronics in tool and battery pack deliver best in class system durability
- Optimised performance with all adhesives and cool temperatures
- Anti-drip feature prevents unwanted dripping when trigger is released
- Dial control with 6 speed settings allows for maximum bead control
- Large robust plunger design ensures constant flow, reduces blow back and expels all sealant from cartridge
- Individual battery cell monitoring optimises tool run time and ensures long term pack durability
- On board fuel gauge and LED light
- REDLITHIUM-ION™ battery pack delivers up to 2x more run time, up to 20% more power, up to 2x more battery life and operates better down to -20°C than other lithium-ion technologies
- Flexible battery system: works with all Milwaukee® M18™ batteries



	C18 PCG/310C-201B
Battery pack capacity (Ah)	2.0
No. of batteries supplied	1
Charger supplied	40 min
Max. pushing force (N)	4500
Speed settings	6
Standard equipment	310 ml canister cartridge holder
Weight with battery pack (kg)	2.3
Supplied in	Tool bag
Article Number	4933441310

## M18 HPT M18™ HYDRAULIC PRESS TOOL

- Balanced, in-line design suitable for one-handed use
- REDLINK™ overload protection electronics in tool and battery pack deliver best in class system durability
- Battery-tool communication: press operation doesn't start to prevent incomplete pressing in case of low charged battery. Pre-press battery check ensures enough charge to complete each press
- Service intervals: advanced electronics count cycles and notify users when tool reaches calibration intervals
- 4-step and precise battery status indicator
- Press indicator: provides visual confirmation of a quality connection
- Long-term reliability: goes an industry-leading 40,000 cycles between calibration inspections - The tool will not stop working after reaching 40,000 cycles
- Allows to press system related up to 108 mm copper- and 110 mm composite pipes
- Universal jaw reception to fit most common jaw sizes available on the market
- Individual battery cell monitoring optimises tool run time and ensures long term pack durability
- Fuel gauge displays remaining charge
- RED LITHIUM-ION™ battery pack delivers up to 2x more run time, up to 20% more power, up to 2x more battery life and operates better down to -20°C than other lithium-ion technologies
- Flexible battery system: works with all Milwaukee® M18™ batteries



	M18 HPT-202C	M18 HPT-202C M-KIT	M18 HPT-202C V-KIT	M18 HPT-202C TH-KIT	M18 HPT-202C U-KIT
Battery pack capacity (Ah)	2.0	2.0	2.0	2.0	2.0
No. of batteries supplied	2	2	2	2	2
Charger supplied	80 min	40 min	40 min	40 min	40 min
Press cycles	40,000	40,000	40,000	40,000	40,000
Weight with battery pack (kg)	3.3	3.3	3.3	3.3	3.3
Standard equipment	–	3 x M-profile jaws (15/22/28 mm)	3 x V-profile jaws (15/22/28 mm)	3 x TH profile jaws (16/20/32 mm)	3 x U-profile jaws (16/20/25 mm)
Supplied in	Kitbox	Kitbox	Kitbox	Kitbox	Kitbox
Article Number	4933443115	4933443125	4933443130	4933443135	4933443140

## FORCE LOGIC™ JAWS FOR M18 HPT

Jaw profile	Fits	Nominal size	Art. No. 4932-	EAN Code 4002395
M	Geberit-Mapress	M12	430244	379057
M	VSH	M15	430246	379071
M	Eurotubi	M18	430248	379095
M	Raccorderie	M22	430250	379118
M	Metalliche	M28	430252	379132
M	Rubinetteria	M35	430254	379156
M	Bresciane	M42	430255*	379163
M	Sanha	M54	430256*	379170
V		V12	430261	379224
V		V15	430263	379248
V	Viega	V18	430265	379262
V	Cornap	V22	430267	379286
V	IBP	V28	430269	379309
V	Sanha	V35	430271	379323
V		V42	430272*	379330
V		V54	430273*	379347
TH	ALB	TH14	430275	379361
TH	Cornap	TH16	430277	379385
TH	Fränkische	TH18	430279	379408
TH		TH20	430281	379422

Jaw profile	Fits	Nominal size	Art. No. 4932-	EAN Code 4002395
TH		TH25	430355	380169
TH	Henco	TH26	430284	379453
TH	IPA	TH32	430286	379477
TH	Sanha	TH40	430288*	379491
TH	Tiemme	TH50	430289*	379507
TH	Ivar	TH63	430290*	379514
U		U14	430292	379538
U		U16	430294	379552
U		U18	430296	379576
U	Uponor	U20	430298	379590
U	ALB	U25	430300	379613
U	Kan-therm	U32	430302	379637
U	Wavin	U40	430304*	379651
U		U50	430305*	379668
U		U63	430306*	379675
Ring-Jaw			430307	379682

\* Please use jaw with ring jaw adaptor



**M18 PP2A**  
**M18 FUEL™ POWERPACK**

- M18 CPD - M18 FUEL™ compact percussion drill
- M18 CID - M18 FUEL™ 1/4" hex compact impact driver



**M18 PP2A-402C**

Battery pack capacity (Ah)	4.0
No. of batteries supplied	2
Charger supplied	80 min
Supplied in	Kitbox
Article Number	4933440522

**M18 PP2B**  
**M18 FUEL™ POWERPACK**

- M18 CPD - M18 FUEL™ compact percussion drill
- M18 CW12 - M18 FUEL™ compact 1/2" impact wrench



**M18 PP2B-402C**

Battery pack capacity (Ah)	4.0
No. of batteries supplied	2
Charger supplied	80 min
Supplied in	Kitbox
Article Number	4933440903

**M18 PP6B**  
**M18™ POWERPACK**

- HD18 PD - M18™ Heavy Duty percussion drill
- M18 BID - M18™ compact impact driver
- HD18 SX - M18™ Heavy Duty SAWZALL® with gear protection clutch
- HD18 CS - M18™ Heavy Duty circular saw for wood and plastic
- HD18 AG - M18™ Heavy Duty angle grinder
- M18TLED - M18™ work light



**M18PP6B-402C**

Battery pack capacity (Ah)	4.0
No. of batteries supplied	2
Charger supplied	80 min
Supplied in	Tool bag
Article Number	4933443588



12345 67 815872 9922 659 1100 74



# M28™





## HD28 PD M28™ PERCUSSION DRILL

- With its Milwaukee® high powered motor it delivers a staggering 85 Nm of torque, ideal for powering through the toughest of applications
- REDLINK™ overload protection electronics in tool and battery pack deliver best in class system durability
- All metal gear case provides maximum durability
- Compact size of only 237 mm over all length
- 13 mm Röhm chuck provides maximum durability
- Individual battery cell monitoring optimises tool run time and ensures long term pack durability
- Fuel gauge displays remaining charge
- Built in LED light illuminates the work surface
- REDLITHIUM-ION™ battery pack delivers up to 2x more run time, up to 20% more power, up to 2x more battery life and operates better down to -20°C than other lithium-ion technologies



	HD28 PD-32C
Battery pack capacity (Ah)	3.0
No. of batteries supplied	2
Charger supplied	60 min
No load speed gear 1 (rpm)	0 - 450
No load speed gear 2 (rpm)	0 - 1800
Chuck capacity (mm)	13
Max. drilling wood (mm)	65
Max. drilling steel (mm)	16
Max. drilling concrete (mm)	20
Max. torque (Nm)	85
Weight with battery pack (kg)	2.5
Supplied in	Kitbox
Article Number	4933410819

## HD28 IW M28™ ½" DRIVE IMPACT WRENCH

- With its Milwaukee® 4-pole frameless motor it delivers a staggering 440 Nm of torque, ideal for powering through the toughest of applications
- REDLINK™ overload protection electronics in tool and battery pack deliver best in class system durability
- Durable, lightweight magnesium gear case for extended life and comfort
- Variable speed trigger for enhanced control and accuracy
- ½" square drive with detent pin for secure socket retention
- Non-slip gripping surfaces for maximum comfort and control
- Exclusive reversible battery pack design for optimal tool balance
- Individual battery cell monitoring optimises tool run time and ensures long term pack durability
- Fuel gauge displays remaining charge
- REDLITHIUM-ION™ battery pack delivers up to 2x more run time, up to 20% more power, up to 2x more battery life and operates better down to -20°C than other lithium-ion technologies



	HD28 IW-0	HD28 IW-32X
Battery pack capacity (Ah)	-	3.0
No. of batteries supplied	0	2
Charger supplied	-	60 min
No load speed (rpm)	0 - 1450	0 - 1450
Impact rate (ipm)	0 - 2450	0 - 2450
Tool reception	½" square	½" square
Max. torque (Nm)	440	440
Weight with battery pack (kg)	-	4.1
Supplied in	Dyna Case	Dyna Case
Article Number	4933416930	4933416920

## HD28 HX M28™ SDS 3-MODE HAMMER DRILL WITH FIXTEC CHUCK

- High powered motor - gives corded tool performance
- REDLINK™ overload protection electronics in tool and battery pack deliver best in class system durability
- Powerful hammer mechanism: delivers 2.8 J of impact energy
- All metal gear case - optimum seating of the gears for enhanced service life
- 4-mode operation: rotary hammer, hammer only, rotation only and variolock for maximum versatility
- FIXTEC system - keyless chuck changing
- L-space construction for perfect balance and control
- Individual battery cell monitoring optimises tool run time and ensures long term pack durability
- Fuel gauge displays remaining charge
- REDLITHIUM-ION™ battery pack delivers up to 2x more run time, up to 20% more power, up to 2x more battery life and operates better down to -20°C than other lithium-ion technologies



	HD28 HX-0	HD28 HX-32X
Battery pack capacity (Ah)	-	3.0
No. of batteries supplied	0	2
Charger supplied	-	60 min
Tool reception	SDS-Plus	SDS-Plus
Blow energy [EPTA][J]	2.8	2.8
Max. drilling concrete (mm)	26	26
Weight with battery pack (kg)	-	4.2
Supplied in	Dyna Case	Dyna Case
Article Number	4933415511	4933415508

## HD28 MS M28™ METAL DRY CUT SAW

- Milwaukee®'s high performance motor delivers 3200 rpm for fast cutting
- REDLINK™ overload protection electronics in tool and battery pack deliver best in class system durability
- Large cutting depth of 61 mm
- Compact, ergonomic design provides superior control over standard metal saws, reciprocating saws and band saws
- Ergonomic soft grip handle design for more comfortable use
- Electronic motor brake, saw blade stops within seconds
- Individual battery cell monitoring optimises tool run time and ensures long term pack durability
- Built in LED light illuminates the work surface
- Fuel gauge displays remaining charge
- REDLITHIUM-ION™ battery pack delivers up to 2x more run time, up to 20% more power, up to 2x more battery life and operates better down to -20°C than other lithium-ion technologies
- Premium 174 mm carbide blade
- Supplied with 36 tooth blade



	HD28 MS-0	HD28 MS-32C
Battery pack capacity (Ah)	-	3.0
No. of batteries supplied	0	2
Charger supplied	-	60 min
Cutting depth (mm)	61	61
No load speed (rpm)	3200	3200
Blade diameter (mm)	174	174
Weight with battery pack (kg)	4.2	4.2
Supplied in	Dyna Case	Kitbox
Article Number	4933416880	4933416870

## HD28 AG-115 M28™ 115 MM ANGLE GRINDER

- Milwaukee®'s high performance motor delivers maximum power whilst (optimising) maximising the power to weight ratio
- REDLINK™ overload protection electronics in tool and battery pack deliver best in class system durability
- Full metal gear case delivers heavy duty durability
- Reduced height of gear box and slim girth design deliver optimum ergonomics
- Fast and easy wheel change with patented FIXTEC nut
- Burst resistant and tool-free safety guard for best user protection and fast adjustment
- AVS side handle for most compatible work and less strain to the user
- Individual battery cell monitoring optimises tool run time and ensures long term pack durability
- Fuel gauge displays remaining charge
- REDLITHIUM-ION™ battery pack delivers up to 2x more run time, up to 20% more power, up to 2x more battery life and operates better down to -20°C than other lithium-ion technologies



	HD28 AG-0	HD28 AG-32C
Battery pack capacity (Ah)	-	3.0
No. of batteries supplied	0	2
Charger supplied	-	60 min
No load speed (rpm)	9000	9000
Disc diameter (mm)	115	115
Cutting depth (mm)	28	28
Spindle size	M 14	M 14
Weight with battery pack (kg)	-	2.8
Supplied in	Dyna Case	Kitbox
Article Number	4933416950	4933416940

## HD28 SX M28™ SAWZALL®

- Milwaukee®'s high performance motor delivers maximum power whilst (optimising) maximising the power to weight ratio
- REDLINK™ overload protection electronics in tool and battery pack deliver best in class system durability
- Milwaukee® patented FIXTEC clamp for fast and easy keyless blade change
- Gear protection clutch - protects the gearbox in case of blade lock ups
- Counter balance mechanism to reduce vibrations
- 29 mm stroke length, 3000 spm for extremely fast cutting
- Tool free, adjustable shoe quickly adjusts blade depth
- Convenient two-speed selection for best cut control in different materials
- Soft grip gripping surfaces for maximum comfort and control
- Individual battery cell monitoring optimises tool run time and ensures long term pack durability
- Fuel gauge displays remaining charge
- REDLITHIUM-ION™ battery pack delivers up to 2x more run time, up to 20% more power, up to 2x more battery life and operates better down to -20°C than other lithium-ion technologies



	HD28 SX-0	HD28 SX-32C
Battery pack capacity (Ah)	-	3.0
No. of batteries supplied	0	2
Charger supplied	-	60 min
No load speed gear 1 (rpm)	0 - 2000	0 - 2000
No load speed gear 2 (rpm)	0 - 3000	0 - 3000
Stroke length (mm)	29	29
Weight with battery pack (kg)	-	4.1
Supplied in	Dyna Case	Kitbox
Article Number	4933416860	4933416850

## HD28 JSB M28™ BODY GRIP JIGSAW

- Milwaukee® high performance motor delivers 2800 spm for fast cutting
- REDLINK™ overload protection electronics in tool and battery pack deliver best in class system durability
- Soft start
- 2-speed selector switch for ideal speed in different materials
- Patented FIXTEC system for fast keyless blade change and bevel adjustment with snap-in at 0° and 45°
- Four-stage adjustment of the pendulum action for increased cutting performance and longer saw blade life
- Adjustable saw dust blower
- Exact saw blade guidance with large blade support roller on needle bearings fitted in a very low position
- Die-cast base plate for high durability
- Individual battery cell monitoring optimises tool run time and ensures long term pack durability
- Fuel gauge displays remaining charge
- REDLITHIUM-ION™ battery pack delivers up to 2x more run time, up to 20% more power, up to 2x more battery life and operates better down to -20°C than other lithium-ion technologies



	HD28 JSB-0	HD28 JSB-32X
Battery pack capacity (Ah)	-	3.0
No. of batteries supplied	0	2
Charger supplied	-	60 min
No load stroke rate (spm)	2100 / 2800	2100 / 2800
Max. cutting capacity wood (mm)	135	135
Max. cutting capacity steel (mm)	10	10
Stroke length (mm)	26	26
Weight with battery pack (kg)	-	3.5
Supplied in	Dyna Case	Dyna Case
Article Number	4933419026	4933419016

## HD28 CS M28™ CIRCULAR SAW

- Milwaukee® powerful 4200 rpm motor easily cuts most timber construction materials
- REDLINK™ overload protection electronics in tool and battery pack deliver best in class system durability
- Versatile 54 mm cutting depth, 50° bevel cut capacity
- Heavy Duty construction with all metal lower / upper blade guards and aluminium shoe
- Left-blade design for optimal cut-line visibility and control
- Electronic motor brake, saw blade stops within seconds
- Ergonomic soft grip handle design for more comfortable use
- Individual battery cell monitoring optimises tool run time and ensures long term pack durability
- Fuel gauge displays remaining charge
- REDLITHIUM-ION™ battery pack delivers up to 2x more run time, up to 20% more power, up to 2x more battery life and operates better down to -20°C than other lithium-ion technologies
- Supplied with 24 tooth saw blade, parallel guide, dust port and allen key



	HD28 CS-0	HD28 CS-32C
Battery pack capacity (Ah)	-	3.0
No. of batteries supplied	0	2
Charger supplied	-	60 min
No load speed (rpm)	4200	4200
Max. cutting depth 90° (mm)	54	54
Max. cutting depth 45° (mm)	39	39
Blade diameter (mm)	165	165
Arbor size (mm)	15.87	15.87
Weight with battery pack (kg)	-	3.6
Supplied in	Dyna Case	Kitbox
Article Number	4933419022	4933419017



## C12-28 DCR M12™ - M28™ RADIO WITH MP3 PLAYER CONNECTION

- Exclusive AM/FM tuner with digital processor delivers highest reception accuracy and signal clarity
- Premium speakers and 40 W amplifier produce rich, full sound
- Weather sealed auxiliary compartment protects MP3 players and other audio devices
- Shock absorbing ABS polymer and steel construction protects against abusive jobsite conditions
- Customisable equaliser and 10-station preset
- Powered by M12™, M14™, M18™, M28™, V18, V28 & PBS 3000 batteries or a mains AC outlet
- Supplied with 220 - 240 V power adapter, 3.5 mm jack plug for auxiliary connection i.e iPods



**C12-28 DCR-0**

Voltage (DC) (V)	12 - 28
Voltage (AC) (V)	220 - 240
Battery type	Li-ion & PBS 3000
Battery pack capacity (Ah)	–
No. of batteries supplied	0
Charger supplied	–
Dimensions (mm)	495 x 241 x 279
Weight (kg)	7.3
Supplied in	–
Article Number	4933410665

## M28 PACK G M28™ POWERPACK

- HD28 PD – M28™ percussion drill
- HD28 HX – M28™ SDS 3-mode drill
- M28 WL – M28™ lamp



**M28 Pack G - 32C**

Battery pack capacity (Ah)	3.0
No. of batteries supplied	2
Charger supplied	60 min
Supplied in	Dyna Case
Article Number	4933413820

## M28 PACK H M28™ POWERPACK

- HD28 PD – M28™ percussion drill
- HD28 AG – M28™ 115 mm angle grinder



**M28 Pack H-32C**

Battery pack capacity (Ah)	3.0
No. of batteries supplied	2
Charger supplied	60 min
Supplied in	Dyna Case
Article Number	4933413815

## BATTERIES



	System	Battery type	Voltage (V)	Battery pack capacity (Ah)	Article Number
M12 B	M12	Li-ion	12	1.5	4931427105
M12 B2	M12	Li-ion	12	2.0	4932430064
M12 BX	M12	Li-ion	12	3.0	4932352664
M12 B4	M12	Li-ion	12	4.0	4932430065
M18 B	M18	Li-ion	18	1.5	4932352667
M18 B2	M18	Li-ion	18	2.0	4932430062
M18 BX	M18	Li-ion	18	3.0	4932352668
M18 B4	M18	Li-ion	18	4.0	4932430063
M28 BX	M28	Li-ion	28	3.0	4932352523

## BATTERIES - PBS SYSTEM



	System	Battery type	Voltage (V)	Battery pack capacity (Ah)	Article Number
B 12	PBS 3000	NiCd	12	1.4	4932373527
BXS 12	PBS 3000	NiCd	12	2.0	4932373529
BXL 12	PBS 3000	NiCd	12	2.4	4932373530
MXL 12	PBS 3000	NiMH	12	3.0	4932399311
BXL 24	PBS 3000	NiCd	24	2.4	4932373560

## CHARGERS



	System	Charging range	Charging time	For battery type NiCd	For battery type NiMH	For battery type Li-ion	Article Number
TCA 7224 MB	PBS 3000	7.2 - 24 V	12 min	Yes	Yes	–	4932399035
RCA 7224 MB	PBS 3000	7.2 - 24 V	47 min	Yes	Yes	–	4932386670
C12 C	M12	12 V	40/80 min	–	–	Yes	4932352000
M12-18C	M12,M18,M14	12 - 18 V	40/80 min	–	–	Yes	4932352959
M1418 C6 110 V	M14,M18	14.4 V - 18 V	40/80 min	–	–	Yes	4932430087
M1418 C6 230 V	M14,M18	14.4 V - 18 V	40/80 min	–	–	Yes	4932430086
M28 C	M28	28 V	60 min	–	–	Yes	4932352524

## LAMPS

**NEW**



**NEW**



	Voltage (V)	Battery type	System	Battery compatibility	Bulb type	Article Number
M12 TLED-0	12	Li-ion	M12	All Milwaukee® M12™ batteries	LED	4932430360
M12 SL-0	12	Li-ion	M12	All Milwaukee® M12™ batteries	LED	4932430178
M18 TLED-0	18	Li-ion	M18	All Milwaukee® M18™ batteries	LED	4932430361
M18 AL-0	18	Li-ion	M18	all Milwaukee® M18™ batteries	LED	4932430392
M28 WL LED-0	28	Li-ion	M28	3.0 Ah	LED	4932352527

## M18 AL M18™ AREA LIGHT

- High performance 8 LED lights provides 1100 Lumen
- M18™ LED electronics - over 4 hours of run time on REDLITHIUM™ 4.0 Ah battery pack
- Compact roll cage design provides superior durability
- Convenient built-in handle - ability to hang vertically or horizontally
- Wall mount capability - ability to mount on 13 mm EMT conduit
- Flexible battery system: works with all Milwaukee® M18™ batteries



	M18 AL-0
Voltage (V)	18
Battery type	Li-ion
System	M18
Battery compatibility	All Milwaukee® M18™ batteries
Bulb type	LED
Article Number	4932430392



# HAMMERS







AVS  
www

Milwaukee

AVS  
www

THERMAL



## KANGO 950

### 10 KG CLASS DRILLING AND BREAKING HAMMER

- 20 J blow energy for best in class breaking performance
- 1700 watt motor - best in class with plenty in reserve for the toughest applications
- DIGITRONIC® - fullwave electronics for precise power adjustment to application
- 3 handles - all with AVS (Anti-Vibration-System) and soft grip for comfortable and less tiring use
- All metal gearcase - optimum seating of the gears for enhanced service life
- Service indicator light
- Automatic lubrication system for longer life time
- In-Line motor design for more comfort in below waist applications
- Ideal for usage with generators
- Variolock (12 positions) for selecting the most appropriate chisel angle
- 6 m cable
- Standard deadman switch



	KANGO 950 S	KANGO 950 K
Power input (W)	1700	1700
No load speed (rpm)	125 - 250	125 - 250
Blow energy [EPTA][J]	20	20
Full load hammer action (bpm)	975 - 1950	975 - 1950
Full load speed (soft hammer) (rpm)	125 - 250	125 - 250
Max. drilling solid bit (mm)	50	50
mx. drilling tunnel bit (mm)	80	80
Max. drilling core bit (mm)	150	150
Tool reception	SDS-Max	K-Hex
Vibration drilling (m/s <sup>2</sup> )	12.5	12.5
Vibration chiseling (m/s <sup>2</sup> )	11	11
Weight (kg)	11.8	11.8
Supplied in	Kitbox	Kitbox
Article Number 110 V	4933375752	4933375660
Article Number 240 V	4933405365	4933405358

## KANGO 900

### 10 KG CLASS BREAKING HAMMER

- 20 J blow energy for best in class breaking performance
- 1600 watt motor - best in class with plenty in reserve for the toughest applications
- DIGITRONIC® - fullwave electronics for precise power adjustment to application
- 3 handles - all with AVS (Anti-Vibration-System) and soft grip for comfortable and less tiring use
- Service indicator light
- Automatic lubrication system for longer life time
- In-Line motor design for more comfort in below waist applications
- Ideal for usage with generators
- Variolock (12 positions) for selecting the most appropriate chisel angle
- 6 m cable



	KANGO 900 S	KANGO 900 K
Power input (W)	1600	1600
Blow energy [EPTA][J]	20	20
Full load hammer action (bpm)	975 - 1950	975 - 1950
Tool reception	SDS-Max	K-Hex
Vibration chiseling (m/s <sup>2</sup> )	11	11
Weight (kg)	11.0	11.0
Supplied in	Kitbox	Kitbox
Article Number 110 V	4933375756	4933375670
Article Number 240 V	4933375720	4933409258

## KANGO 750 S

### 7 KG CLASS DRILLING AND BREAKING HAMMER

- Large, heavy weight striker delivers maximum 11.9 J impact energy
- Powerful 1550 watt ensures maximum power yet due to better heat dissipation, guarantees maximum possible durability
- Fullwave electronics for precise power adjustment to application
- Soft start for precise start of drilling/chiselling
- AVS (Anti-Vibration-System) and soft grip on front and back handle
- Additional handle can be fixed in 3 different positions
- Soft hammer mode reduces blow energy for chiselling in sensitive materials
- Roto-stop and multi-position chisel function
- Service indicator light
- Variolock (12 positions) for selecting the most appropriate chisel angle
- 6 m cable
- Standard deadman switch



	KANGO 750 S
Power input (W)	1550
No load speed (rpm)	300
Blow energy [EPTA][J]	11.9
Full load hammer action (bpm)	2740
Full load speed (soft hammer) (rpm)	240
Max. drilling solid bit (mm)	50
mx. drilling tunnel bit (mm)	80
Max. drilling core bit (mm)	150
Tool reception	SDS-Max
Vibration drilling (m/s <sup>2</sup> )	9.5
Vibration chiseling (m/s <sup>2</sup> )	9.1
Weight (kg)	8.2
Supplied in	Kitbox
Article Number 110 V	4933398601
Article Number 240 V	4933398753

## KANGO 545 S

### 5 KG CLASS DRILLING AND BREAKING HAMMER

- Large, heavy weight striker delivers maximum 8.5 J impact energy
- Powerful 1300 watt ensures maximum power yet due to better heat dissipation, guarantees maximum possible durability
- Constant electronic for keeping the speed uniform even under load
- Soft start for precise start of drilling/chiselling
- AVS (Anti-Vibration-System) and soft grip on front and back handle
- Additional handle can be fixed in 3 different positions
- Soft hammer mode reduces blow energy for drilling/chiselling in sensitive materials
- Roto-stop and multi-position chisel function
- Service indicator light
- Variolock (12 positions) for selecting the most appropriate chisel angle
- 6 m cable
- Standard deadman switch



	KANGO 545 S
Power input (W)	1300
No load speed (rpm)	450
Blow energy [EPTA][J]	8.5
Full load hammer action (bpm)	2840
Full load speed (soft hammer) (rpm)	350
Max. drilling solid bit (mm)	45
mx. drilling tunnel bit (mm)	65
Max. drilling core bit (mm)	100
Tool reception	SDS-Max
Vibration drilling (m/s <sup>2</sup> )	13
Vibration chiseling (m/s <sup>2</sup> )	9
Weight (kg)	6.7
Supplied in	Kitbox
Article Number 110 V	4933398280
Article Number 240 V	4933405347

## KANGO 540 S

### 5 KG CLASS DRILLING AND BREAKING HAMMER

- Best power to weight ratio in its class - 7.5 J and 6.3 kg
- Powerful 1100 watt ensures maximum power, guarantees maximum possible durability
- Soft start for precise start of drilling/chiseling
- Low vibration construction enhances usage time per day
- Robust magnesium gear housing for tough environments, exact seat fitting of gear components and better cooling
- Roto-stop and multi position chisel function gives 12 different positions to optimize working angle
- Safety clutch protects operator and machine if drill bit jams
- Soft grip main side handle
- Variolock (12 positions) for selecting the most appropriate chisel angle
- 4 m cable
- Standard deadman switch



#### KANGO 540 S

Power input (W)	1100
No load speed (rpm)	450
Blow energy [EPTA][J]	7.5
Full load hammer action (bpm)	3000
Full load speed (soft hammer) (rpm)	430
Max. drilling concrete (mm)	40
mx. drilling tunnel bit (mm)	65
Max. drilling core bit (mm)	105
Tool reception	SDS-Max
Vibration drilling (m/s <sup>2</sup> )	16.8
Vibration chiseling (m/s <sup>2</sup> )	16.7
Weight (kg)	6.3
Supplied in	Kitbox
Article Number 110 V	4933418140
Article Number 240 V	4933418120



# A NEW GENERATION OF SDS-MAX DRILLING

Ø MM	A MM	B MM	QUANTITY	ID. NO. 4932	EAN CODE 4002395
12	340	200	●	1	352750 374083
12	540	400	● ▲	1	352751 374090
14	340	200	●	1	352752 374106
14	540	400	● ▲	1	352753 374113
15	340	200	●	1	352754 374120
15	540	400	● ▲	1	352755 374137
16	340	200	●	1	352756 374144
16	540	400	▲	1	352757 374151
16	940	800	▲	1	352758 374168
16	1320	1180	▲	1	352759 374175
18	340	200	●	1	352760 374182
18	540	400	▲	1	352761 374199
18	940	800	▲	1	352762 374205
18	1320	1180	▲	1	352763 374212
20	320	200	●	1	352764 374229
20	520	400	▲	1	352765 374236
20	920	800	▲	1	352766 374243
20	1320	1200	▲	1	352767 374250

Ø MM	A MM	B MM	QUANTITY	ID. NO. 4932	EAN CODE 4002395
22	320	200	●	1	352768 374267
22	520	400	▲	1	352769 374274
22	920	800	▲	1	352770 374281
22	1320	1200	▲	1	352771 374298
24	320	200	●	1	352772 374304
24	520	400	▲	1	352773 374311
25	320	200	●	1	352774 374328
25	520	400	▲	1	352775 374335
25	920	800	▲	1	352776 374342
25	1320	1200	▲	1	352777 374359
28	370	250	●	1	352778 374366
28	570	450	▲	1	352779 374373
28	670	550	▲	1	352780 374380
28	920	800	▲	1	352781 374397
28	1320	1200	▲	1	352782 374403
30	370	250	●	1	352783 374410
30	570	450	▲	1	352784 374427
32	370	250	●	1	352785 374434

Ø MM	A MM	B MM	QUANTITY	ID. NO. 4932	EAN CODE 4002395
32	570	450	●	1	352786 374441
32	920	800	▲	1	352787 374458
32	1320	1200	▲	1	352788 374465
35	370	250	●	1	352789 374472
35	570	450	●	1	352790 374489
35	920	800	▲	1	352791 374496
38	370	250	●	1	352792 374502
38	570	450	●	1	352793 374519
40	370	250	●	1	352794 374526
40	570	450	▲	1	352795 374533
40	920	800	▲	1	352796 374540
40	1320	1200	▲	1	352797 374557
45	570	450	●	1	352798 374564
52	570	450	●	1	352799 374571
<b>SDS-Max 5pc drill bit set:</b>					
Ø 16, 18 x 540 mm.				1	352800 374588
Ø 20, 22, 25 x 520 mm.					

▲ Pre-drill with a short drill bit of the same diameter. ● 2 cut drill bits.

## K 500 ST 5 KG CLASS TRADESMAN BREAKING HAMMER

- Best power to weight ratio in its class - 7.5 J and 5.9 kg
- Powerful 1100 watt ensures maximum power, guarantees maximum possible durability
- Soft start for precise start of chiselling
- Low vibration construction enhances usage time per day
- Robust magnesium gear housing for tough environments, exact seat fitting of gear components and better cooling
- Roto-stop and multi position chisel function gives 12 different positions to optimize working angle
- Safety clutch protects operator and machine if drill bit jams
- Soft grip main side handle
- Variolock (12 positions) for selecting the most appropriate chisel angle
- 4 m cable



	<b>K 500 ST</b>
Power input (W)	1100
Blow energy [EPTA][J]	7.5
Full load hammer action (bpm)	3000
Tool reception	SDS-Max
Vibration chiseling (m/s <sup>2</sup> )	16
Weight (kg)	5.9
Supplied in	Kitbox
Article Number 110 V	4933443345
Article Number 240 V	4933443920

## KANGO 500 S 5 KG CLASS BREAKING HAMMER

- Large, heavy weight striker delivers maximum 8.5 J impact energy
- Powerful 1300 watt ensures maximum power yet due to better heat dissipation, guarantees maximum possible durability
- Constant electronic for keeping the speed uniform even under load
- Soft start for precise start of chiselling
- AVS (Anti-Vibration-System) and soft grip on front and back handle
- Additional handle can be fixed in 3 different positions
- Soft hammer mode reduces blow energy for chiselling in sensitive materials
- Roto-stop and multi-position chisel function
- Service indicator light
- Variolock (12 positions) for selecting the most appropriate chisel angle
- 6 m cable



	<b>KANGO 500 S</b>
Power input (W)	1300
Blow energy [EPTA][J]	8.5
Full load hammer action (bpm)	2840
Tool reception	SDS-Max
Vibration chiseling (m/s <sup>2</sup> )	9
Weight (kg)	6.3
Supplied in	Kitbox
Article Number 110 V	4933398290
Article Number 240 V	4933398220

## PLH 32 QEX 32 MM SDS-PLUS 3-MODE L-SHAPED HAMMER

- Tough, durable hammer with excellent drilling performance in concrete from the high torque motor and gears and a 3.8 joule single blow energy
- 900 watt motor combined with optimised drilling speed results in unsurpassed drilling performance
- Electronics with accelerator switch
- Good balance and easy handling from the compact L-shape design with AVS (Anti-Vibration-System) and soft grip handle
- Fast tool changing from the FIXTEC system with keyless chuck
- Heavy Duty magnesium gear casing for optimum seating of gears for a longer operational life
- Reliable safety clutch protects machine and user
- Roto-stop and variolock for maximum control when doing light chiselling work
- 4 m cable



	<b>PLH32 QEX</b>
Power input (W)	900
Blow energy [EPTA][J]	3.8
Full load hammer action (bpm)	0 - 4500
Full load speed (soft hammer) (rpm)	0 - 800
Max. drilling concrete (mm)	32
Max. drilling steel (mm)	16
Max. drilling wood (mm)	40
Tool reception	SDS-Plus
Vibration drilling (m/s <sup>2</sup> )	22
Vibration chiseling (m/s <sup>2</sup> )	15.5
FIXTEC	Yes
Weight (kg)	3.6
Supplied in	Kitbox
Article Number 110 V	4933400071

## PH 26 26 MM SDS-PLUS 3-MODE HAMMER

- Most compact, slimline hammer available in its class
- Unmatched performance with 2.4 J blow energy and 4500 bpm
- Lowest vibration only 13.5 m/s<sup>2</sup>
- Extreme Milwaukee® durability thanks to integrated metal block technology
- Innovative and patented internal weight reduction technology
- Hammer stop function
- Safety clutch protects machine and user if drill bit jams
- X version comes with fast changing FIXTEC adaptor with keyless chuck
- 4 m cable



	<b>PH 26 X</b>
Power input (W)	725
Blow energy [EPTA][J]	2.4
Full load hammer action (bpm)	0 - 4500
Full load speed (rpm)	0 - 1250
Max. drilling concrete (mm)	26
Max. drilling steel (mm)	13
Max. drilling wood (mm)	30
Tool reception	SDS-Plus
Vibration drilling (m/s <sup>2</sup> )	13.5
Vibration chiseling (m/s <sup>2</sup> )	8.5
FIXTEC	Yes
Weight (kg)	2.6
Supplied in	Kitbox
Article Number 110 V	4933429025
Article Number 240 V	4933429020

## PH 30 30 MM SDS-PLUS 3-MODE HAMMER

- Over sized heavy weight striker delivers 3.6 joules of impact energy
- 1030 watt motor combined with optimised drilling speed results in unsurpassed drilling performance
- Soft start for precise start of drilling/chiselling
- Low vibration due to ergonomic soft grip on main and side handle
- Soft hammer mode for drilling in sensitive materials
- Fast tool changing from FIXTEC system with keyless chuck
- Greatest durability in class is achieved by utilising integrated metal block technology in the gearing mechanism
- Brush rotation ring (for same power in forward & reverse action)
- Safety clutch protects machine and user if drill bit jams
- 4 m cable



	PH 30 POWER X
Power input (W)	1030
Blow energy [EPTA][J]	3.6
Full load hammer action (bpm)	0 - 3800
Full load speed [rpm]	0 - 850
Max. drilling concrete (mm)	30
Max. drilling steel (mm)	13
Max. drilling wood (mm)	40
Tool reception	SDS-Plus
Vibration drilling (m/s <sup>2</sup> )	22
Vibration chiseling (m/s <sup>2</sup> )	14
FIXTEC	Yes
Weight (kg)	2.9
Supplied in	Kitbox
Article Number 110 V	4933396512
Article Number 240 V	4933396420

## PLH 20 20 MM SDS-PLUS 2-MODE L-SHAPED FIXING HAMMER

- Best power to weight ratio in its class - 2.0 J and 1.9 kg
- 620 watt motor combined with optimised drilling speed results in unsurpassed drilling performance
- Motor cooling airflow is designed in a way that blows drilling debris away from user when drilling overhead
- AVS (Anti-Vibration-System) for more comfortable use and less strain on the user
- Optimised hammer drilling 5 – 12 mm
- Safety clutch protects user and machine if drill bit jams
- Forward and reverse mechanism
- Soft grip handle for comfort
- 4 m cable



	PLH 20
Power input (W)	620
Blow energy [EPTA][J]	2.0
Full load hammer action (bpm)	0 - 4400
Full load speed (soft hammer) (rpm)	0 - 2700
Max. drilling concrete (mm)	20
Max. drilling steel (mm)	13
Max. drilling wood (mm)	30
Tool reception	SDS-Plus
Vibration drilling (m/s <sup>2</sup> )	10.2
FIXTEC	No
Weight (kg)	1.9
Supplied in	Kitbox
Article Number 110 V	4933408110
Article Number 240 V	4933415755

## PD-705 705 W PERCUSSION DRILL

- Compact and powerful 705 W motor
- Compact ergonomic design with large soft grip areas offers excellent handling
- Variable speed control with forward and reverse mechanism
- Hammer action stop for rotary drilling
- 13 mm metal keyless chuck
- 43 mm gear neck diameter for use in drill stands
- 4 m cable



	PD-705
Power input (W)	705
No load speed (rpm)	0 - 3000
Max. drilling concrete (mm)	15
Max. drilling masonry (mm)	16
Max. drilling steel (mm)	13
Max. drilling wood (mm)	30
Max. static stalling torque (Nm)	15
Chuck capacity (mm)	13
Weight (kg)	1.9
Supplied in	-
Article Number 240 V	4933431970





Milwaukee

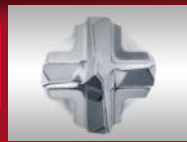
Nothing but HEAVY DUTY.™

# RX4

# LONGER THAN LIFE!

# 50% LONGER LIFE TIME

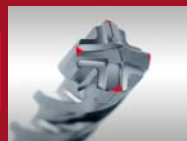
# RX4



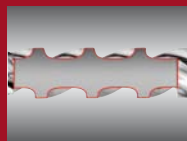
Thanks to the optimum 4x90° symmetry, all four carbide cutting edges function evenly and do not jam up when hitting rebar.



Four symmetrically spiral shoulders ensure low, uniform flute wear.



Solid one piece carbide tip for outstanding lifetime.



Thicker core body for low vibration and extra strength minimising drill bit breakages.



Centering tip for straight forward spot drilling with pinpoint accuracy.



The PGM seal guarantees precisely fitting anchor application holes over the entire life time of the drill bit.

## SDS-plus RX4 drill bits – 4 cut

SDS-plus drill bit set (5-piece)  
Plastic container

Contents:  
Ø 5/6x110 mm  
Ø 6/8/10x160 mm  
Art. no. 4932352833



SDS-plus drill bit set (5-piece)  
Plastic container

Contents:  
Ø 5.5x110 mm  
Ø 5.5/6/7/8x160 mm  
Art. no. 4932352835



SDS-plus drill bit set (7-piece)  
Plastic cassette

Contents:  
Ø 5/6/8x110 mm  
Ø 6/8/10/12x160 mm  
Art. no. 4932352051

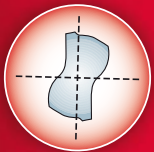
# THUNDERWEB

## METAL DRILL BITS

### HSS GROUND - DIN 338

#### THUNDERWEB

The Thunderweb design is characterised by a conical shaped web which gets thicker towards the back of the drill bit.



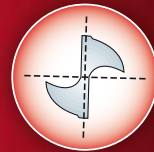
Parabolic web cross section

- Accepts higher feed pressure and torque.
- Less breakages.
- Long life

**VS**

#### STANDARD DRILL BIT

The web on standard drill bits is a constant thickness throughout the length of the bit.



Conventional type web cross section



**19 piece set**

Art. no. 4932352374



**25 piece set**

Art. no. 4932352376

**Milwaukee**

Nothing but **HEAVY DUTY.**

# ICE HARDENED



8pc set  
Art. no. 49224005



14pc set  
Art. no. 49224152



17pc set  
Art. no. 49224102

## SUPERIOR QUALITY OF CUT AMAZING DRILLING SPEED!



### Bi-metal holesaws: wood, metal & plastics

- **Superior quality of cut**
  - Precise and clean holes
- **Amazing drilling speed**
  - Aggressive tooth profiles with less snagging & effective chip clearance
- **Heavy-Duty**
  - M42 steel for unsurpassed durability

### Diamond grit holesaws: ceramic/porcelain tile, cement board & cast iron

- High quality diamond grit is deposited and welded to the strip edge to give a strong bond and unbeatable durability. The coarse grit provides fast and effortless drilling.
- Large dust chambers ensure rapid dust removal and allow water into the cut to keep the teeth cool and extend lifetime.
- Tough steel holesaw body to give high wear resistance.
- Thin wall design meets less resistance for faster and cleaner drilling with less vibrations.
- 4 drive pin holes for easier arbor location.



## DCM 2-350 C

### DIAMOND DRILLING MOTOR

- Two-speed diamond coring motor
- Internal slip clutch
- Triple-reduction gearing
- Soft start switch
- Motor overload protection
- PRCD residual current device
- Built-in water swivel
- Dual-mount switch box
- Supplied with open end wrench, Hex keys and strap with switch box



	DCM 2-350 C
Power input (W)	2800
No load speed gear 1 (rpm)	300
No load speed gear 2 (rpm)	600
Max. drilling core bit (mm)	350
Tool reception	1 1/2" UNC
Weight (kg)	9
Supplied in	–
Article Number 240 V	40044

## DR 350 T

### DIAMOND DRILL STAND FOR DCM 2-350 C

- Light weight drilling rig from aluminium
- Tilting (0 - 45°)
- Drill angle and depth display
- Quick-connect motor plate
- Fine adjustment of feed speed
- Vertical and horizontal water level
- Drill hole centering device
- Leveling screws
- Feed handle attachable to both sides of rig
- Transportable handle & wheels
- Supplied with 3/8" Hex key, 6 mm Hex key, 17 x 19 wrench, quick-connect motor plate, 4 pcs. M8 x 25 mm screws, centering device



	DR 350 T
Max. drilling core bit (mm)	350
Stroke length (mm)	610
Height (mm)	1042
Base size (mm)	391 x 523
Angle capacity (°)	45
Weight (kg)	19.5
Supplied in	–
Article Number 240 V	4933400600

## DCM 2-250 C

### DIAMOND DRILLING MOTOR

- Two-speed diamond coring motor
- Internal slip clutch
- Triple-reduction gearing
- Soft start switch
- Motor overload protection
- PRCD residual current device
- Built-in water swivel
- Dual-mount switch box
- Supplied with open end wrench, Hex keys and strap with switch box



	DCM 2-250 C
Power input (W)	2800
No load speed gear 1 (rpm)	450
No load speed gear 2 (rpm)	900
Max. drilling core bit (mm)	250
Tool reception	1 1/2" UNC
Weight (kg)	9
Supplied in	–
Article Number 240 V	40964

## DR 250 TV

### DIAMOND DRILL STAND FOR DCM 2-250 C

- Light weight drilling rig from aluminium
- Tilting (0 - 45°)
- Drill angle and depth display
- Quick-connect motor plate
- Integrated vacuum base plate (use with and without vacuum possible)
- Fine adjustment of feed speed
- Vertical and horizontal water level
- Drill hole centering device
- Leveling screws
- Feed handle attachable to both sides of rig
- Supplied with 3/8" Hex key, 6 mm Hex key, 17 x 19 wrench, quick-connect motor plate, 4 pcs. M8 x 25 mm screws, centering device, vacuum rubber seal



	DR 250 TV
Max. drilling core bit (mm)	250
Stroke length (mm)	520
Height (mm)	834
Base size (mm)	276 x 467
Angle capacity (°)	45
Weight (kg)	10
Supplied in	–
Article Number	4933400590



**Milwaukee**

Nothing but **HEAVY DUTY.**



12340 SE 345882



No.0013 658 2568



## DD 3-152

### 3-SPEED COMBI DIAMOND DRILL

- Powerful 1900 watt motor
- Optimum speed range to drive small and large core bits
- Soft start with stepless speed control
- LED thermal motor temperature protection indicator
- Safety clutch
- Quick-in connection - secure motor fixing connection for ease of use and minimum vibration
- L shaped handle for better weight distribution
- 3-speed gearbox
- 5 m cable with PRCO
- Supplied with dust extraction connector, 32 mm and 41 mm spanners



DD 3-152	
Power input (W)	1900
Full load speed (rpm)	550 / 1250 / 2700
Max. drilling concrete (mm)	152
Max. drilling masonry (mm)	202
Tool reception	1/2" G + 1 1/2" UNC
Weight (kg)	6.5
Supplied in	Kitbox
Article Number 110 V	4933431530
Article Number 240 V	4933428000

## DR 152 T

### DIAMOND DRILL STAND FOR DD 3-152

- Cast aluminium base for easy transportation
- 45° tilt for angle drilling
- Quick-in connection - precise and quick connection of tool and rig
- Compact base - saves space for drilling in confined spaces
- 4 leveling screws for fast adjustment
- Horizontal and vertical spirit levels
- Transport handle
- Locking knob locks unit at highest position to aid fixing of machine and core bit
- Two spoke wheel feed for left and right hand operation
- Vacuum plate is available as accessory (4932352676)



DR 152 T	
Max. drilling core bit (mm)	152
Base size (mm)	330 x 210
Angle capacity (°)	45
Weight (kg)	10
Supplied in	-
Article Number	4933428020

## DD 2-160 XE

### 2-SPEED DRY DIAMOND DRILL

- Powerful robust motor delivers constant high torque
- Dual protection from the interlinked mechanical and electronic clutches to protect both user and tool
- Robust construction with metal gearbox
- Safe handling from the long AVS side handle and "D-shaped" back handle
- 2-speed gear box
- M16 FIXTEC adaptor for fast core bit changing
- Soft hammer action - when activated allows the core bit to cut faster and easier
- Soft start via accelerator switch for precision and controlled drilling
- FIXTEC Cleanline rotor (additional accessory) the best solution for dust extraction
- 4 m cable
- Supplied with SDS-plus pilot drill bit (8 x 140mm)



DD 2-160 XE	
Power input (W)	1500
No load speed (rpm)	0 - 1500 / 0 - 3000
Full load speed (rpm)	0 - 890 / 0 - 1770
No load hammer stroke (rpm)	24,000 / 48,000
Max. drilling masonry (mm)	162
Max. static stalling torque (Nm)	50
Tool reception	M18 x 2.5
Weight (kg)	4.2
Supplied in	Kitbox
Article Number 110 V	4933368700
Article Number 240 V	4933368705



# CONSTRUC





# TION

13 658 2568





# SAWZALL™ BLADE



## TEARING IT UP FOR 60 YEARS!

### THIN KERF

DOUBLE  
DUTY  
UPGRADE

#### Metal cutting thin kerf blades

- **Longest:** Improved tooth geometry for best speed and double the lifetime Bi-Metal quality cutting teeth with 8% Cobalt the ultimate in performance and lifetime.
- **Strongest:** Stamped indentations around the reception strengthens the blade at its weakest point.
- **Thin kerf:** Slim blade body optimised for maximum flexibility and speed
- **Ice hardened:** Unique cryogenic heat treatment process gives tougher teeth for cutting the hardest of metals and up to 50% longer life.



### THE TORCH™

DOUBLE  
DUTY  
UPGRADE

#### Heavy Duty metal cutting and demolition

- **Longest:** Improved tooth geometry for best speed and double the lifetime. Thick 1,06mm robust blade body for precise cuts 25mm blade height for improved stability and minimum vibration Bi-Metal quality cutting teeth with 8% Cobalt the ultimate in performance and lifetime.
- **Strongest:** Stamped indentations around the reception strengthens the blade at its weakest point.
- **Stiffest:** Grid iron pattern is built into the blade to make it more rigid with less tendency to bend or buckle for best durability.
- **Ice hardened:** Unique cryogenic heat treatment process gives tougher teeth for cutting the hardest of metals and up to 50% longer life.



# DES

# PURE DEMOLITION



## THE AX™

### Demolition blades for wood and nail impregnated wood

For faster plunge cutting and reaching into restricted areas. Protects the tooth during nail impacts for increased durability and life time.

- **Strong:** Extra thick 1.60 mm body for maximum robustness and life making it ideal for wood with nails or bolts.
- **Fast:** Aggressive 5 Tpi tooth geometry removes more material per stroke for faster cutting.
- **Sloped shape:** Excellent for plunge cutting and reaching into restricted areas.
- **Shatter resistant:** Bi-Metal construction allows the blade to bend and flex without breaking.

**FANG TIP™ NAIL GUARD™**



## THE WRECKER™

### Extra Heavy Duty blades for metal and demolition

- **Strong and precise:** Extra thick 1.60 mm blade body.
- **Bi-Metal construction:** Excellent blade life and performance.
- **Tooth geometry:** Aggressive strengthened tooth tip design and uniform gullet depth allows for more material to be removed per stroke for faster cutting.
- **Sloped blade shape:** The sloped shape makes this blade ideal for plunge cutting. Most suited for cutting metal and for demolition applications (wood with nails).



## SSPE 1500 X 1500 W SAWZALL®

- 1500 W Milwaukee® motor - highest overload protection in the industry; prevents motor burn up/failure
- Constant power technology - maintains constant speed under load for unmatched cutting performance
- Patented gear protecting clutch - extends gear and motor life by absorbing high impact forces caused by sudden blade lock-ups
- FIXTEC blade clamp system - provides fast and easy blade changes
- Patented AVS Anti-Vibration-System ensures unsurpassed low-vibration running
- Variable speed trigger and dial speed control - maximum speed control
- Adjustable shoe for optimised use of saw blades
- Supplied with a SAWZALL® blade, additional keyed blade clamp and 4 m cable



SSPE 1500 X	
Power input (W)	1500
No load stroke rate (spm)	0 - 2800
Stroke length (mm)	32
Weight (kg)	4.5
Supplied in	Kitbox
Article Number 110 V	4933429145
Article Number 240 V	4933428900

## SSD 1100 X 1100 W SAWZALL®

- High cutting performance due to powerful 1100 watt motor combined with a 28 mm saw stroke
- FIXTEC blade clamp for fast and easy blade changes without any key
- Water & finger protection nose for safer work and better rust protection
- Variable speed trigger switch
- Durable long lasting slider crople mechanism
- Supplied with a SAWZALL® blade and 4 m cable



SSD 1100 X	
Power input (W)	1100
No load stroke rate (spm)	0 - 2900
Stroke length (mm)	28
Weight (kg)	3.2
Supplied in	Kitbox
Article Number 110 V	4933429000
Article Number 240 V	4933416710

## WCE 30 1500 W 125 MM (30 MM DOC) WALL CHASER

- Powerful 1500 watt motor
- Ideal for the installation of conduit for electrical cables
- High performance electronics with overload protection
- Current limitation for soft start
- Easily adjustable cutting width
- In-Line dust extraction connection
- Supplied with 2 diamond discs, special chisel, keys, bayonet adaptor



WCE 30	
Power input (W)	1500
No load speed (rpm)	9500
Disc diameter (mm)	125
Cutting width (mm)	26
Cutting depth (mm)	30
Spindle size	M 14
Weight (kg)	4.3
Supplied in	Kitbox
Article Number 110 V	4933383860
Article Number 240 V	4933383855







# METAL WOR



# KING

13 658 2568



## AGV 22 2200 W ANGLE GRINDER

- Powerful, 2200 W motor with powder field coating for long life time and outstanding performance in all applications
- Extreme compact design with an overall short length of 485 mm and 5.4 kg for most comfortable handling
- Soft start for smooth start up
- Burst resistant quick release safety guard for easy adjustment
- 2-positions Anti-vibration side handle for less vibrations to the user and more comfortable work
- External brush doors for easy access to the brushes for fast servicing
- 4 m rubber cable



	AGV 22-230/DMS
Power input (W)	2200
No load speed (rpm)	6600
Disc diameter (mm)	230
Cutting depth (mm)	68
Spindle size	M 14
Weight (kg)	5.4
FIXTEC flange nut	No
Deadman switch	Yes
Line lock out function	No
Autobalancer system	No
AVS side handle	Yes
Rotatable main handle	No
Supplied in	-
Article Number 110V	4933440915
Article Number 240V	4933440910

## AG 10 1000 W ANGLE GRINDER

- Powerful, 1000 W motor for strong performance in all applications
- Extreme compact design with an overall short length of 276 mm and 2.1 kg for most comfortable handling
- Burst resistant and tool-free quick release safety guard for fast adjustment
- Ramped slide switch - easy actuating switch, even when wearing gloves
- 4 m rubber cable



	AG 10-115	AG 10-125
Power input (W)	1000	1000
No load speed (rpm)	11,000	11,000
Disc diameter (mm)	115	125
Cutting depth (mm)	28	33
Spindle size	M 14	M 14
Weight (kg)	2.1	2.1
FIXTEC flange nut	No	No
Supplied in	-	-
Article Number 110V	4933440325	4933440340
Article Number 240V	4933440320	

## AG 750 750 W ANGLE GRINDER

- Compact and powerful 750 watt motor
- Metal gearbox for extended durability
- Directed air exhaust
- Gear head rotates at 90° intervals for added versatility
- Flat metal gear head for excellent visibility of workpiece and optimised cutting depth
- Protected air inlets
- Spindle lock
- Supplied with safety guard, side handle, flange, flange nut, 4 m cable



	AG 750-115
Power input (W)	750
No load speed (rpm)	10,000
Disc diameter (mm)	115
Cutting depth (mm)	28
Spindle size	M 14
Weight (kg)	1.8
Supplied in	-
Article Number 100 V	4933431125
Article Number 240 V	4933431120

## CHS 355 2300 W CHOPSAW

- 2300 watt motor with 3800 rpm for excellent cutting performance
- Lock pin function keeps the saw closed position during transportation (no chain required)
- Quick release vice adjustment for fast angle adjustment from -45° to +45°
- Quick release mitre clamp for fast work piece change
- Spindle lock for fast and easy disc change
- Easy brush change due to external brush doors
- Integrated metal fan for best durability and long life
- Stamped steel base with additional ribs to prevent deforming



	CHS 355
Power input (W)	2300
No load speed (rpm)	3800
Wheel size (mm)	355
Cutting capacity round profile 90° and 45° (mm)	125 / 100
Cutting cap. square profile 90° and 45° (mm)	115 / 80
Cutting capacity rectangle 90° and 45° (mm)	230 x 70 / 100 x 80
Cutting cap. L-shape profile 90° and 45° (mm)	130 / 80
Bore size (mm)	25.4
Weight (kg)	18
Supplied in	-
Article Number 110V	4933410360
Article Number 240 V	4933410355



## Maximum productivity with



## 50% faster material removal 2x longer lifetime

- **Ceramic hybrid disc:** grinds steel, stainless steel, bronze, titanium, aluminium.
- **Ceramic grain:** grinds and finishes in one step! Material removal like grit 40, finishing result like grit 60!
- **Self trimming backing pad:** allows grinding to the last grain!
- **Natural fibre backing pad:** low vibration & noise, no harmful dust.
- **Highly flexible:** perfectly adjusts to working piece.
- **Low heat development:** no metal discolouration, especially on stainless steel.
- **Made in Germany**

**Applications:** Ferrous metals, non-ferrous metals (aluminium, titan, etc.), stainless steel V2A (1.4301) / V4A (1.4401)



Disc Ø mm	Grit	Backing plate material	Id. No. 4932
115	Multigrain 40/60	Natural Fibre	430407
125	Multigrain 40/60	Natural Fibre	430408

Orders are only possible in master cartons (contains 10 x 4932430407).

Minimum order quantity is 10 x 4932430407 (= 1 master carton).

Order quantities greater than 10 pcs are to be ordered in multiples of 10 pcs (ie. 20, 30, 40, 50 ...).

## 1 mm cutting discs

- +30% lifetime to conventional cut off discs
- 50% less cutting time
- 50% less dust
- Lower loss of material: vital when cutting stainless steel
- Less sparks and noise
- Requires less machine power
- Most suitable for stainless and acid-resistant steel, hardox, heat-resistant cast steel, spring steel, mild and tool steel

Disc Ø mm	Thickness mm	Id. No. 4932
115	1	371902
125	1	371903
180	1.5	371904
230	1.9	371905





## AP 12 E

### 1200 W POLISHER WITH ELECTRONIC VARIABLE SPEED

- 1200 watt motor
- Ergonomic design for long work shifts
- Special gear for high spindle torque and ideal polishing speed
- Variable speed selection for ideal speed
- Thermal overload protection
- No load speed limitation
- 6 m cable



	AP 12 E
Power input (W)	1200
No load speed (rpm)	900 - 2500
Disc diameter (mm)	150
Spindle size	M 14
Weight (kg)	2.2
Variable speed	Yes
Supplied in	–
Article Number 240 V	4933383925

## AP 14-2 200 E

### 1450 W POLISHER

- 1450 watt motor for best performance in all applications
- High torque gear for best performance and no speed drop in low speed applications without overheating
- Variable speed selection from 490 - 2100 RPM for various applications
- Speed settings on the top of the motor housing
- Thermal overload protection to prevent overheating
- Lock on function
- Protected spindle lock button
- Special "finger grip" area on the front for best grip
- Unique flexible and soft velcor backing pad to prevent scratches on paint during work
- 6 m long PUR cord to prevent marks on the paint



	AP 14-2 200 E	AP 14-2 200 E SET
Power input (W)	1450	1450
No load speed (rpm)	490 - 2100	490 - 2100
Disc diameter (mm)	200	200
Spindle size	M 14	M 14
Weight (kg)	2.6	2.6
Variable speed	Yes	Yes
Line lock out function	Yes	Yes
Soft start function	Yes	Yes
Supplied in	–	Dynra Case
Article Number 240 V	4933442350	4933442355

AP 14-2 200 E SET contains: 2 X Polishing Sponge, Lambswool, Flexible Backing Pad, Cloth, 2 X 250ml Compound

## MCS 66

### DRY CUT METAL CIRCULAR SAW

- Powerful 1800 watt, 4000 rpm motor
- Dry-cutting technology provides fast, clean and burr-free metal cutting
- Cuts steel, stainless steel, aluminium, insulated foam panel
- Large cutting depth of 66 mm
- Exclusive chip-release shield latch for fast waste disposal and blade changing
- Plunge lever for fast and effective plunge cuts
- Supplied with 42 tooth cermet tipped blade



	MCS 66
Power input (W)	1800
No load speed (rpm)	4000
Blade diameter (mm)	203
Max. cutting depth 90° (mm)	66
Bore size (mm)	15.87
Weight (kg)	6.4
Supplied in	Kitbox
Article Number 240 V	4933440615



**ACCESSORIES**

# DIAMOND BLADES

## SPEEDCROSS

Hard universal HUDD

Abrasive universal AUDD



**MAXIMUM SPEED  
LONG LIFE  
LOW VIBRATION!**

SIZE	115 mm	125 mm	150 mm	230 mm
HUDD	4932399819	4932399820	4932399821	4932399822
AUDD	4932399823	4932399824	4932399825	4932399826

### FEATURES:

- Universal blades for a variety of materials
- Classed into two categories for maximum life time
- 10 mm high segments to ensure long life time
- Laser welded segments, for optimum durability
- Low vibration

### APPLICATION AREAS:

**HARD MATERIALS**

**SOFT/ABRASIVE MATERIALS**

NATURAL  
STONE/  
GRANITE

HARD  
CONCRETE

MEDIUM  
STRENGTH  
CONCRETE

GENERAL  
BUILDING  
MATERIALS

BRICK

SOFT/  
GREEN  
CONCRETE

ASPHALT

— HUDD — AUDD

# WOOD WOR





# KING

13 658 2568





## SCS 65 Q 190 MM CIRCULAR SAW (65 MM DOC)

- 1900 watt motor with large power reserves
- Unrivaled balance and comfort due to the adjustable "TILT-LOK" handle with soft grip
- Large cutting capacity of 65 mm
- Ideally positioned levers for depth and bevel cut adjustments
- Good visibility of blade at the cutting edge for improved control
- Robust aluminium base plate
- Supplied with a carbide tipped 20 tooth saw blade, parallel guide and 4 m QUIK-LOK cable



	SCS 65 Q
Power input (W)	1900
No load speed (rpm)	5800
Blade diameter (mm)	190
Max. cutting depth 45° (mm)	52
Max. cutting depth 90° (mm)	65
Bore size (mm)	30
Weight (kg)	5.5
Supplied in	Kitbox
Article Number 110 V	638055
Article Number 240 V	638051

## CS 60 184 MM CIRCULAR SAW (61 MM DOC)

- 1600 W powerful motor with 5800 rpm for fast cutting through tough materials
- Large cutting capacity of 61 mm
- 0 - 56° bevel capacity and 45° positive stop
- Quick release locking lever design for fast bevel adjustments
- Integrated dust blower keeps cut line clear
- Large, ergonomic handles and levers for improved ergonomics and control
- Long side fence for straight cuts and precise guidance
- Supplied with a carbide tipped 24 tooth saw blade, parallel guide and 4 m cable



	CS 60
Power input (W)	1600
No load speed (rpm)	5800
Blade diameter (mm)	184
Max. cutting depth 45° (mm)	49
Max. cutting depth 90° (mm)	61
Bore size (mm)	30
Weight (kg)	4.8
Supplied in	Tool bag
Article Number 110 V	4933429070
Article Number 240 V	4933410865

## JSPE 135 HEAVY DUTY TOP HANDLE JIGSAW

- Robust and powerful top handle jig saw for fast cutting action in wood, aluminium, steel or ceramics
- Powerful 750 W motor
- Precision blade guidance for precise cuts
- Patented FIXTEC system for fast keyless blade change and bevel adjustment with snap-in at 0° and 45°
- Electronic with variable speed preselection, soft start and constant speed under load
- Four-stage pendulum action adjustment for even more powerful cutting performance and longer saw blade life
- Adjustable chipping blower to the front and the rear
- LED light for illumination of cutting area
- Supplied with 5 saw blades, anti-splintering device, dust cap, absorption adaptor, sliding shoe and 4 m cable



	JSPE 135 TX
Power input (W)	750
No load stroke rate (spm)	800 - 3000
Max. cutting capacity wood (mm)	135
Max. cutting capacity steel (mm)	10
Max. cutting capacity aluminium (mm)	30
Mitre capacity (°)	45
Stroke length (mm)	26
Weight (kg)	2.5
Supplied in	Kitbox
Article Number 110 V	4933381645
Article Number 240 V	4933381640



## ROS 150 E-2

### 6" (150 MM) RANDOM ORBIT SANDER

- Random orbital sander with unmatched sanding properties through simultaneous rotation and oscillation of sanding disc
- Reduction gear makes full, efficient use of the powerful 440 W motor
- 6.4 / 3.2 mm orbits for fast removal & finishing
- Variable speed (4000-10,000 rpm) - especially needed for heat-sensitive materials
- Fast and easy change of sandpaper with hook and loop system
- Removable dustbag and also fits standard 26 mm vacuum hose
- Through body sealed slide switch
- Additional handle for a balanced and even weight distribution over the work piece
- Supplied with a dust bag, sanding disc and 4 m cable



#### ROS 150 E-2

Power input (W)	440
No load speed (rpm)	4000 - 10,000
Oscillation diameter (mm)	6.4 / 3.2
Sanding pad size (mm)	150
Weight (kg)	2.8
Supplied in	-
Article Number 240V	4933431180

## ROS 125 E

### 5" (125 MM) RANDOM ORBIT SANDER

- Ideal for sanding of wood, metal and plastics within confined spaces
- 300 Watt powerful motor with 2.4 mm orbital action
- Variable speed (7000-12,000 rpm) - especially needed for heat-sensitive materials
- Hook & Loop paper fitment
- Excellent dust extraction - 90% dust collection efficiency with larger dust bag
- Easy to clean dust bag
- On board vac adaptor- fits standard 36 mm vacuum hoses
- Supplied with textile dust bag and sanding paper set (60, 80, 120 grit)



#### ROS 125E

Power input (W)	300
No load speed (rpm)	7000 - 12,000
Oscillation rate (opm)	14,000 - 26,000
Oscillation diameter (mm)	2.4
Sanding pad size (mm)	125
Weight (kg)	1.7
Supplied in	Tool bag
Article Number 240V	4933433180



## MS 305 DB 12" (305 MM) DUAL BEVEL SLIDING MITRE SAW

- Mitre angle digital readout - provides repeatable accuracy to 0.1°
- 1800 Watt direct drive motor with constant power technology
- Dual integral jobsite lights illuminate the cut line
- Integral dust channel captures 75% of all dust by capturing dust near the cut on both sides of the blade and directing it to the back of the saw
- Unique inline motor design - for excellent visibility from both sides to the work piece and better balanced transport
- Mitre capacity 55° to the left and 60° to the right - for maximum versatility. Mitre detents L & R at: 0°, 15°, 22.5°, 31.6°, 45°, 60°
- Dual-bevel design - to incline the saw head left & right 0° - 48° with bevel detents L & R at: 0°, 22.5°, 33.85°, 45°, 48°
- Fast and accurate bevel adjustment
- Supplied with workpiece clamp, saw blade (60 teeth), vacuum adaptor Ø 35 / 58 mm, wrench and 3 m cable



	MS 305 DB
Power input (W)	1800
No load speed (rpm)	3200
Blade diameter (mm)	305
Bevel capacity left (°)	48
Bevel capacity right (°)	48
Mitre capacity left (°)	55
Mitre capacity right (°)	60
Weight (kg)	29.5
Supplied in	-
Article Number 110 V	4933410210
Article Number 240 V	4933410205

## MS 216 8 1/2" (216 MM) SLIDING MITRE SAW

- 1800 Watt motor for high performance cutting in hard timber
- Durability - dual vertical steel rails with linear bearings deliver smooth sliding action
- Rail lock - the saw head locks in the back position automatically
- Adjustable laser - for perfect and quick alignment to cut line
- Steel detent plate with preset angles - gives repeatable accurate cuts
- Lock lever/handle over mold - allows the user to make repeated cuts comfortably and without fatigue
- Mitre release system - for quick and smooth change of cutting orientation
- Integral LED jobsite light
- Spindle lock - for quick and easy blade change
- Heavy duty cast base and fence ensures durability and accuracy
- 48°/-2° bevel capacity
- Supplied with saw blade (48 teeth), blade spanner and work clamp



	MS 216 SB
Power input (W)	1800
No load speed (rpm)	6000
Blade diameter (mm)	216
Bevel capacity left (°)	48
Bevel capacity right (°)	-2
Mitre capacity left (°)	50
Mitre capacity right (°)	50
Max. cutting capacity 45° mitre/ 45° bevel (mm)	190 x 48
Max. cutting capacity 45° mitre/ 90° bevel (mm)	190 x 62
Max. cutting capacity 90° mitre/ 45° bevel (mm)	270 x 48
Max. cutting capacity 90° mitre/ 90° bevel [mm]	270 x 60
Bore size (mm)	30
Weight (kg)	14.5
Supplied in	-
Article Number 110 V	4933410925
Article Number 240 V	4933410920

## MSUV 275 UNIVERSAL MITRE SAW STAND

- Upright folding design for easy storage in workshops, garages and vehicles
- Improved setup with easy one action foot pedal lock and single lift point
- 2750 mm material capacity
- 180 kg maximum load
- Universal saw brackets - compatible with most popular brands
- Non-skid rubber feet
- Quick release extension locks
- Integrated storage tray



	MSUV 275
Height (mm)	850
Base size (mm)	1170
Extendable up to (mm)	2750
Collapsed size (mm)	1340
Bearing force [kg]	180
Weight (kg)	26
Supplied in	-
Article Number	4933419550

## MSL 1000 UNIVERSAL MITRE SAW STAND

- Light weight aluminium, easy to transport onto the job site
- 1.08 m total length, will fit into most small vans and cars
- Extendable each side - 2.08 m extended
- Will hold up to 180 kg
- One point leg adjustment for leveling on uneven ground
- Quick release brackets
- Height adjustable length stops
- Compact foldable design



	MSL 1000
Height (mm)	850
Base size (mm)	1081
Extendable up to (mm)	2082
Collapsed size (mm)	1081
Bearing force [kg]	180
Weight (kg)	16.6
Supplied in	-
Article Number	4933428970





12310 3E 34582  
No. 0013 658 2568





Nothing but **HEAVY DUTY.**<sup>™</sup>

# 8 M/26<sup>FT</sup> METRIC & IMPERIAL MAGNETIC TAPE MEASURE

Art. no. 48225225

## ALSO AVAILABLE:

### 8 M METRIC MAGNETIC TAPE MEASURE

Art. no. 48225308

### 5 M/16' METRIC & IMPERIAL MAGNETIC TAPE MEASURE

Art. no. 48225216

### 5 M METRIC MAGNETIC TAPE MEASURE

Art. no. 48225305



### Overmould gripping area

For extra comfort and durability

### Non reflective blade coating

Makes the tape anti-glare and easier to read in bright sunlight

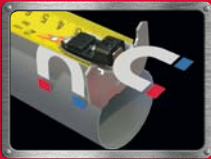
### Double sided nylon bond blade protection

For extreme tape durability against dust, dirt, debris and water

### Premium quality

27 mm blade width

### Class II accuracy



### Dual magnets

One magnet holds the hook in front; a second magnet prevents roll off on the material as e.g. on steel studs, pipes



### 2-Sided scale printing

Horizontal measuring scale on the front side; vertical measuring scale on back side for increased readability



### Finger stop

For comfortable hold and finger protection when the blade retracts



### 5-Point reinforced frame

For job site durability



### Wire belt clip

Clips on easily without fraying and tearing clothing



### Architect scale

Is integrated for easy calculating of scaled drawings (ISO 5455).  
5 m & 8 m: 1:20 / 1:50 scales,  
5 m/16 ft & 8 m/26 ft:  
1/8" to 1' / 1/4" to 1' scales

## QUICK ADJUST WATER PUMP PLIERS

- For gripping, fastening and holding work pieces.
- One hand push button adjustment for fast and firm grip.
- Fine scale adjustment positions for precise grip. Less downtime and more efficiency.
- Self locking button for fast and firm adjustment.
- V-groove jaws with profile for firmer grip, more precise fit and reduced slipping. Special teeth hardening 60 HRC.
- Made from Nickel and Chrome forged alloy steel for best durability and good rust protection.
- Ergonomic and durable overmoulded grips add comfort and last longer.
- Deburring head and handle design. No need for extra tools.
- Available in 3 lengths for optimum leverage.



Total length (mm)	200	250	300
Max. cutting capacity nut size/ AF (mm)	30	36	50
Max. cutting capacity tubes/ pipes Ø (mm)	32	42	60
Article Number	48223108	48223110	48223112

## RASPING JAB SAW

- 150 mm plaster / drywall blade. Extra strong thicker blade making it more resistant for plunge cuts. Coated for corrosion protection.
- Rubber overmould. Increased comfort and reduced hand slippage.
- Built in rasping holes. Allows user to rapidly expand holes or smooth rough edges.



Article Number	Rasping jab saw 48220304
----------------	-----------------------------

## FASTBACK FLIP UTILITY KNIFE

- One handed blade opening. User can flip open the blade with one hand for easy activation.
- Integrated gut hook. Allows users to make cuts without exposing the blade.
- Tool free blade change. Less down time in the field for blade changes.
- Wire stripper. Eliminates the need to look for another tool in users bag.
- Thin body design. Tool is easily stored in user's pocket.
- Belt clip. For easy storage.



	Fastback knife	Fastback knife with blade storage
Article Number	48221901	48221902

## SLIDING UTILITY KNIFE

- Side slide blade activation. Reduces the risk of exposing the blade accidentally.
- Wire stripper. Eliminates the need for another tool in the users bag.
- Tool free blade change. Saves time changing blades.
- Blade storage. Magnetic holder for 5 blades.
- Heavy Duty. Full metal body with rubber overmould for increased comfort and reduced hand slippage.



	Sliding utility knife
Article Number	48221910

## PLASTIC CUTTER

- Cuts PEX, PB, MDP, PE, plastic electrical conduits, pneumatic pipe, plastic overflow pipe, rubber hoses, silicon hoses up to Ø 25 mm.
- V-shaped blade allows quick and straight cuts; prevents crushing of material.
- Replaceable stainless steel blade.
- Robust construction – metal core from the head to the handles for maximum life time.
- Grooves on the head allows stripping of couplings.
- Corrosion resistant head.
- One handed locking mechanism, tool remains closed while in pouch, spring loaded but easy opening.
- Ergonomic and durable overmoulded grips add comfort and last longer.



	Plastic cutter
Article Number	48224200

## METAL SNIPS

- For short straight and shaped cuts.
- Thumb and forefinger slots for increased comfort and less fatigue. Allows user to push through sheet metal with ease with less risk of cutting oneself.
- Serrated cutting edges prevent slippage when cutting.
- Less hand fatigue when cutting thicker materials. Design with compound leverage action.
- Torsion spring opens jaws automatic during cutting for faster cutting action and less fatigue work.
- Made from forged alloy steel for best durability – Cr Steel.
- Chrome plated rust protected blades for increased life time. Extra hardened to 65 HRC.
- One hand locking mechanism.
- Flush streamline design for non-snagging in material.
- Triple cutting direction identification – on the head, handle and by colour coded handle.
- Ergonomic and durable overmoulded grips add comfort and last longer.



	Left (red)	Right (green)	Straight (yellow)
Total length (mm)	260	260	260
Max. cutting capacity steel (mm)	1.0	1.0	1.0
Article Number	48224010	48224020	48224030

## DIAGONAL PLIERS

- For all around cutting use.
- Tip protection – tips are off set ground to protect cutting edges from damage when dropped.
- High leverage design – long handles for maximum cutting power and leverage.
- Deburrer – Deburring ribs on head for up to 25 mm pipe. No need for extra tools.
- 15° offset head allows flush cutting, can be used as a nail puller for easier and quicker prying and pulling.
- Laser hardened durable cutting edges. Extra hardened to 64 HRC. Cuts wire, bolts, screws and nails.
- Made from forged alloy Chrome Vanadium steel for best durability and good rust protection.
- Ergonomic and durable overmoulded grips add comfort and last longer.



Total length (mm)	160	180
Cut cap. in hard wire (mm)	2.5	3.0
Cutting capacity soft wire (mm)	4.0	4.0
Article Number	48224106	48224107

## HEAVY DUTY LINEMAN'S PLIERS

- For universal gripping, cutting applications.
- High leverage design – long handles for maximum cutting power and leverage.
- Deburrer – Deburring ribs on head for up to 25 mm pipe. No need for extra tools.
- Nail puller – powerful gripping and high leverage.
- Laser hardened durable cutting edges: cuts wire, bolts, screws and nails. Extra hardened jaws to 64 HRC.
- Serrated gripping zone for strong gripping and pulling.
- Made from Chrome Vanadium steel for best durability and good rust protection.
- Ergonomic and durable overmoulded grips add comfort and last longer.



Cut cap. in hard wire (mm)	3.0
Cutting capacity soft wire (mm)	4.6
Total length (mm)	250
Article Number	48223309

## COMBINATION PLIERS WITH WIRE STRIPPER - 6 IN 1 TOOL

- Pliers – specially suitable for gripping, bending and adjusting in restricted areas.
- Wire stripper – strips 5 sizes of wire: 0.5 – 0.75 / 1.0 / 1.5 / 2.5 / 4.0 mm<sup>2</sup>.
- Wire cutter – cuts wire up to 2.5 mm.
- Deburrer – deburring ribs on head for up to 25 mm pipe. No need for extra tools.
- Bolt cutter – cuts M3 and M4 size threaded bolts.
- Loop maker – built in loop maker function for wire up to 6.6 mm<sup>2</sup> / Ø 2.9 mm.
- Crosswise serrated jaws for better grip and excellent control.
- Laser hardened durable cutting edges. Extra hardened to 50 HRC.
- Made from Chrome Vanadium steel for best durability and good rust protection.
- Slim nose design to reach restricted areas.
- Ergonomic and durable overmoulded grips add comfort and last longer.
- One handed locking mechanism, tool remains closed while in pouch, spring loaded but easy opening.



Max. cutting capacity cable (mm)	6.0
Cut cap. in hard wire (mm)	2.5
Stripping capacities (mm <sup>2</sup> )	0.5 - 0.75 / 1.0 / 1.5 / 2.5 / 4.0
Article Number	48229069

## LONG NOSE PLIERS WITH WIRE STRIPPER - 6 IN 1 TOOLS

- Long nose pliers – specially suitable for gripping, bending and adjusting in restricted areas.
- Wire stripper – strips 3 sizes of wire: 0.5 – 0.75 / 1.5 / 2.5 mm<sup>2</sup>.
- Wire cutter – cuts wire up to 2.8 mm.
- Deburrer – Deburring ribs on head for up to 25 mm pipe. No need for extra tools.
- Nail puller – powerful gripping and high leverage.
- Loop maker – built in loop maker function for wire up to 6.6 mm<sup>2</sup> / Ø 2.9 mm.
- Crosswise serrated jaws for better grip and excellent control.
- Laser hardened durable cutting edges. Extra hardened to 64 HRC.
- Made from Chrome Vanadium for best durability and good rust protection.
- Ergonomic and durable overmoulded grips add comfort and last longer.



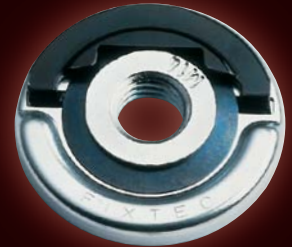
Max. cutting capacity cable (mm)	13.0
Cut cap. in hard wire (mm)	2.8
Stripping capacities (mm <sup>2</sup> )	0.5 - 0.75 / 1.5 / 2.5
Article Number	48229068



## FIXTEC NUT

Art. no. 4932352473

- FIXTEC: Disc changing in seconds, no extra tools required.
- Only 8 mm thin, enabling more surface of disc on the material.
- Compatible to all manufacturers angle grinders up to Ø 150 mm with standard M14 spindle thread.



SPINTECH 2014-15-16 CHATTEAU DE BRUCY

## OSD2 - OFFSET SCREWDRIVER/DRILL Art. no. 4932352320

The OSD2 screwdriver/drill angle attachment is the ideal solution for all screwdriving and drilling applications in restricted areas.



- ① **1/4" Hex bit reception**
  - Magnetic
  - Bit locking mechanism
  - 90° angle to shaft
  - Accepts both standard 25 mm (C 6.3) and ball end reception (E 6.3) screwdriving bits and drill bits
- ② **Softgrip side handle**
  - Rotatable to 360° for left and right hand use
  - With 4 lock positions
- ③ **Two step Hex shaft**
  - Step 1: standard 1/4" (6 mm) Hex shaft for either direct bit reception machines or alternatively into a chuck
  - Step 2: 10 mm Hex shaft for improved grip in larger chucks when carrying out more demanding applications

### Industrial quality

- For use with all cordless tools
- Suitable for use in applications up to 40 Nm torque and a maximum of 1750 rpm

### Versatility

- The OSD2 is capable of both drilling and screwdriving applications





**CHOOSE YOUR**

# ACCESSORIES



50pc Contractor Set  
4932352863

Selection of HSS-G Thunderweb metal, masonry drill bits and Shockwave screwdriving bits and nut drivers for toughest applications.



100pc Contractor Set  
4932352864  
402395375226

A wide choice of HSS-R metal, masonry and wood drill bits; screwdriving bits and nut drivers.



10pc Hackzall® Blade Set  
49220220

Blade content by application:  
2x wood / 3x Universal. Wood - Metal - PVC / 3x thin metal / 2x thicker metal

Set contains 2x 49005460, 3x 49005614, 3x 49005424, 2x 49005418 + storage pouch



10-piece Shockwave Impact Duty™ 1/2" socket set

4932352861

10 x 1/2" sockets  
8/10/11/12/13/14/16/17/19/21 mm



20-piece Shockwave Impact Duty™ 1/4" socket set

4932352862

12 x Sockets  
4/4.5/5/5.5/6/7/8/9/10/11/12/13 mm / 6 x S / Driving bits  
PH2, PZ2, TX15, TX20, TX25, TX30  
Magnetic bit holder / Bit adaptor 1/4"  
Hex to 1/4" Square / Bit adaptor 1/4"  
Square to 1/4" Hex

Impact duty (Chrome-Molybdenum) steel provides ultimate strength and durability. Best fitting thanks to 6 gripping points. Recessed corners allow torque to be transferred across the flats of the socket. Thin wall construction. Deep wall construction provides clearance for protruding bolts. Laser etched size markings for easy identification.



28-piece Shockwave Impact Duty™ bits & nut drivers set

4932352455

A wide choice of 25 mm & 50 mm Shockwave Impact Duty™ bits, magnetic nut drivers 48 mm length and a magnetic bit holder 60 mm length



30-piece Shockwave Impact Duty™ compact drill & drive set

4932352894

A wide choice of 25 mm & 50 mm Shockwave Impact Duty™ bits, 1/4" HEX drill bits and a magnetic bit holder 60 mm length

Shock Zone Geometry – Designed to Flex. Shock zone reduces stress at the tip resulting in less tip breakages. Compression forged tip provides the best fit with screw head, reducing cam out and stripping, resulting in outstanding lifetime. Custom engineered steel.

# BIT SETS FOR ALL MATERIALS

## CONCRETE

## MULTI MATERIAL



RX4 4 cutter set  
(7-piece)

SDS-plus hammer drill  
bits bit set (7-piece)

Concrete drill bit set  
(5-piece)

Concrete drill bit set  
(8-piece)

Concrete Super drill bit  
set (5-piece)

Concrete Super drill bit  
set (7-piece)

Multi material drill bit set  
(7-piece)

**4932352051**

**4932352339**

**4932352333**

**4932352334**

**4932352336**

**4932352337**

**4932352335**

Plastic cassette with  
Ø 5/6/8 x 110 mm &  
Ø 6/8/10/12 x 160 mm

Metal cassette with  
Ø 5/6/8 x 110 mm &  
Ø 6/8/10/12 x 160 mm

Plastic cassette with  
Ø 4/5/6/8/10 mm.

Plastic cassette with  
Ø 3/4/5/6/7/8/9/10 mm

Plastic cassette with  
Ø 4/5/6/8/10 mm

Plastic cassette with  
Ø 4/5/5.5/6/7/8/10 mm

Plastic cassette with  
Ø 3/4/5/6/8/10 mm

Solid one piece 4 cutter  
carbide tip for best  
durability and accurate  
holes. 50% more lifetime  
than standard 2 cutter  
drills

Dynamic, chisel shaped  
drill head for max. drilling  
speed. Toughest carbide  
tip for max. durability.  
Unique 2-flute design for  
min. vibrations.

Diamond ground percussion  
carbide tip with two  
cutting edges. For drilling in brick, tile, ceramic,  
concrete, plaster, slate & aerated concrete  
blocks.

High quality concrete drill bits with a unique  
shaped drill head with centering point & H-spiral  
flute. For drilling in hard materials e.g. concrete,  
aerated concrete blocks, masonry, natural stone,  
artificial stone, ceramic tile, slate & granite

Tungsten carbide tipped  
(TCT) drill bits. Cannot  
be used in hammer  
action. Ideal for drilling  
through a variety of  
materials in one go

## METAL

## WOOD



Thunderweb HSS-G  
set (19-piece)

Thunderweb HSS-G  
set (25-piece)

Long series auger bits set in  
pouch (5-piece)

Switchblade™ kit  
(5-piece)

Contractor bit set  
(7-piece)

Wood drill bit set  
(5-piece)

Wood drill bit set  
(8-piece)

**4932352374**

**4932352376**

**4932352285**

**49225100**

**49220130**

**4932352465**

**4932352466**

Plastic cassette with  
Ø 1-10 mm in  
0,5 mm steps

Plastic cassette with  
Ø 1-3 mm in  
0,5 mm steps

In pouch with Ø 14/16/  
18/20/22 x 470 mm

4x SWITCHBLADE™ selffeed bits Ø  
35/38/54/65 mm / QUIK-LOK extension  
140 mm length / 4x replacement  
SWITCHBLADE™ blades / 4x Feed screws  
/ 4x Set screws / 1x Allen key

Kit incl. selffeed bits Ø  
25/29/32 / 38/44/54/65  
mm, extension 140 mm  
length and feed screws.

Plastic cassette  
with Ø 4/5/6/  
8/10 mm

Plastic cassette  
with  
Ø 3/4/5/6/7/  
8/9/10 mm

Parabolic web cross section - large web  
thickness, accepts higher feed pressure and  
torque, less breakage & long life  
Thunderweb flute form ejects hot chips  
rapidly. Dissepates heat better increasing life  
time. 135° Split point - precision starting,  
penetrates quickly, excellent for very hard  
materials

Suitable for use with all types  
of corded/cordless drills, inc.  
impact wrenches. Extra hard  
shank, durable tip, flexible  
bit body. New Milwaukee®.  
Through-Center head  
geometry. 20° rake angle.  
Polished and powder coated  
flute design.

Aggressive feed screw design for faster  
drilling. SWITCHBLADE™ replaceable  
blade system ensures razor sharp blades  
all the time. For drilling through holes in  
wood for all types of pipe, vents and wire  
trunking.

Suitable for drilling hardboard,  
plywood, chipboard and all natural  
hard and soft wood.



No. 0013 658 2585 12310 EE 243882

**Milwaukee**

Nothing but **HEAVY DUTY.**™

**Techtronic Industries UK**  
Unit 3 Globeside Business Park  
Fieldhouse Lane  
Marlow  
Bucks  
SL7 1HZ